



Parks and Recreation Master Plan 2024-2028

Milford Charter Township, Oakland County, Michigan

Adopted · February 19, 2025

Acknowledgements

Donald D. Green, Supervisor
Cynthia Dagenhardt, Treasurer
Holly Brandt, CMC, Clerk

Township Trustees

Randal K. Busick
William (Bill) E. Mazzara
Dale R. Wiltse
Valenton (Toni) Vulaj

Parks and Recreation Commission

Steve Wolfe, Chairman
Allison Kennedy, Vice Chairman
Charles Hornacek, Recording Secretary
William (Bill) E. Mazzara, Board Liaison
Don McCann
Rebecca Franchock
Kim McFarland
Jessica Schulkey
Ann Marie Rutherford
Tanya Kuza
Quinn Williamson
Judy Klein
Kelley Kettenbeil

Public Hearings: January 13th, 2025
February 19th, 2025

Recommended by

Parks and Recreation Commission: January 13th, 2025
Adopted by Township Board: February 19th, 2025



MCKENNA

235 East Main Street, Suite 105 • Northville, MI 48167 • mcka.com

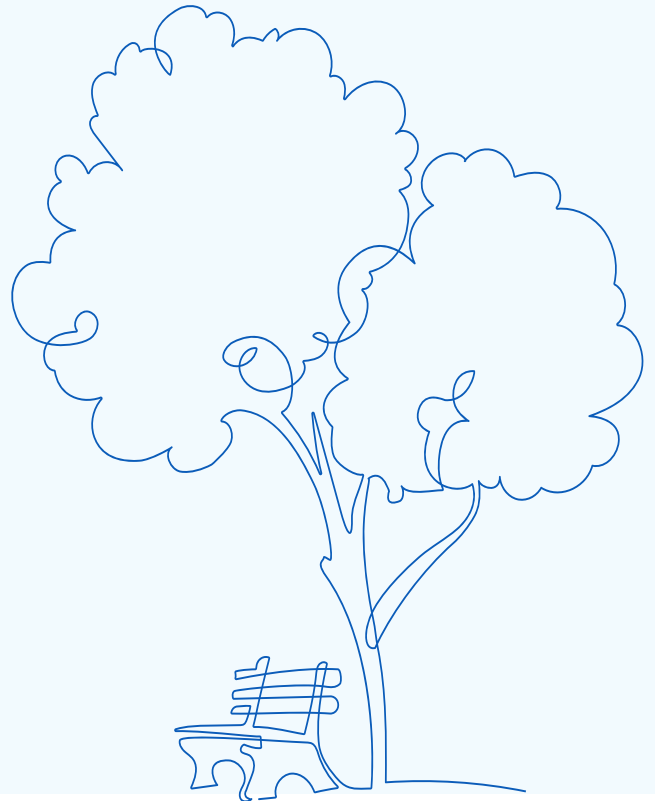


Table of Contents

Chapter 1.	Community Description	1
Chapter 2.	Administrative Structure	5
Chapter 3.	Recreation Inventory	9
Chapter 4.	Description of Planning Process	33
Chapter 5.	Public Input Process	45
Chapter 6.	Goals and Objectives	49
Chapter 7.	Action Program	55
Chapter 8.	Appendices	63

List of Tables

Table 1: Population Trends and Forecast	3
Table 2: Fiscal Analysis	7
Table 3: Recreational Inventory	25
Table 4: Recreation Classification System	34
Table 5: Classification of Milford Area Recreation Facilities	35
Table 6: Existing Recreation vs Published Standards	35
Table 7: Recreation Facility Evaluation	39

List of Maps

Map 1: Regional Location	2
Map 2: Recreational Inventory	27
Map 3: Service Area	36
Map 4: Driving Service Areas Map	38

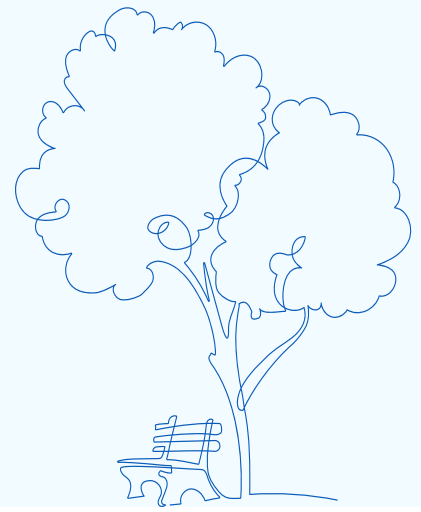


Intentionally left blank



Chapter 1.

Community Description



Milford Township is located in the southwest portion of Oakland County and is bordered by four Oakland County Communities, Lyon Township, the City of Wixom, Commerce Township, and Highland Township. Milford Township is also bordered by Brighton and Brighton Township, which are located in Livingston County. Within the Township borders is the Village of Milford. The Village of Milford is an established, urban village approximately 2.5 square miles in area. Milford Township is approximately 32.5 square miles in area and, according to the 2018-2022 American Community Survey (ACS) 5-Year Estimates, contained 10,498 people.

The 2024-2028 Charter Township of Milford Parks and Recreation Master Plan has been prepared by the Township Parks and Recreation Commission and adopted by the Milford Township Board to serve as a guide and decision-making document for future recreation facilities and programs. The Plan presents an inventory of existing recreation facilities, recreation programs, and environmentally significant open spaces within the Township as well as an evaluation of opportunities and needs. The Plan considers the existing facilities in and around the Township, as well as the anticipated demand for additional or improved facilities and programs. The Plan also includes goals, objectives, and a 5-Year Action Plan. The jurisdiction of this Master Plan includes only Milford Township.

The Plan is also intended to enable the Township to continue to apply for funding assistance from various agencies and work toward implementing the documented recommendations. This Plan provides for five years of grant eligibility with the Michigan Department of Natural Resources.

A predominantly residential community, Milford Township relies on the Village of Milford for its urban amenities such as local shopping and entertainment. The Township is home to Kensington Metropark which is owned and operated by the Huron-Clinton Metropolitan Authority, as well as Camp Dearborn and sections of the Proud Lake and Highland State Recreation Areas. The Township also contains a large portion of the General Motors Proving Grounds. Milford Township provides a desirable setting and some of the most notable topography in the region.

Milford Township is located in the southwest part of Oakland County. It is bordered by Lyon Township, the City of Wixom, Commerce Township, and Highland Township, all of which are in Oakland County. The Township is made easily accessible to the region by its close proximity to Interstate 96 along its southern border, M-59 to its north, and is serviced by both County and local roads. Milford Township is situated in a growth area at the western edge of the Detroit Metropolitan Area and is located approximately 40 miles from downtown Detroit, 25 miles from Ann Arbor, 30 miles from Flint, and 30 to 35 miles from Detroit Wayne County Metropolitan Airport and the Flint Bishop International Airport.





Regional Location Map

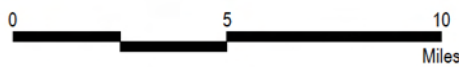
Milford Township, MI

August 17, 2023



LEGEND

- Milford Charter Township
- Village of Milford
- Water Bodies



Basemap Source: Michigan Center for Geographic Information, v. 17a. Data Source: McKenna 2020.



Community Demographics

The socioeconomic characteristics of a community play a role in the demand for certain types of recreation facilities. By examining socioeconomic characteristics such as population, density, age, disability, and household size, municipalities can identify trends and opportunities that may influence future land use and recreation decisions and/or policy choices. This section provides a summary of the socioeconomic characteristics of Milford Township that may influence parks and recreation planning decisions.

The US Census Bureau and American Community Survey (ACS) serve as the primary source of data for this demographics section.

Population Trends and Forecast

Between 1970 and 2021, Milford Township has experienced significant population growth. The total growth rate over the approximately 50-year span was 310.6%. Since the year 2000, the Township population has grown 16.7%, and the population is forecasted to continue to increase by another 44.2% over the next 25 years. The Township is expected to reach an estimated population of 15,133 by the year 2045. This continuing growth is a clear indication that the Township will need to consider the provision of adding Township park facilities and services to accommodate the growing population.

Table 1: Population Trends and Forecast

Year	Milford Twp	Village of Milford	Combined
1970	2,557	4,699	7,256
1980	5,146	5,041	10,187
1990	6,610	5,511	12,121
2000	8,999	6,272	15,271
2010	9,561	6,175	15,736
2021	10,498	6,511	17,009
2045 Estimate	15,133	7,164	22,297

Source: U.S. Census Bureau and 2018-2021 American Community Survey 5-Year Estimates
2045 Estimate - SEMCOG 2045 Population Estimates

Median Age

Knowledge of a community’s age distribution plays a crucial role in the planning of recreation facilities and programs. Whether an area is comprised of older or younger citizens will greatly influence such things as the facilities that are most desired within parks.

The median age in the Township in 2010 was 41.4 and rose to 45 in 2021. Comparatively, the Village of Milford had a median age of 41.7 in 2010 and fell to 40.8 in 2021. This can indicate that the population in the Township is aging, which is a key consideration in understanding the need for park and recreation amenities.

According to SEMCOG’s Regional Development Forecast for Milford Township, the number of households with seniors aged 65 years or older will increase by 72.3% by 2050. This is considerably higher than the projection for Southeast Michigan overall at 32.4%. When making future recreation facility decisions, the Township must be aware of the needs of this growing age group.



Household Size

A household, as defined by the US Census, is all persons who occupy the same housing unit. A housing unit can be described as a house, apartment, mobile home, a group of rooms, or a single room used as a separate living quarters.

A trend occurring nationwide, and characteristic of today's population is the declining size of households. There are several factors that demographers have linked to the declining size. People are marrying later, postponing having children, and having fewer children. Nationwide, married couple families still comprise the largest and economically most powerful household. However, the number of single parent households is increasing, thus contributing to the decline in average household size.

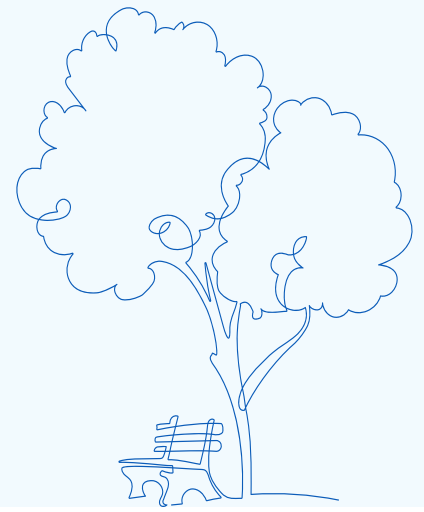
Household size is an important factor when making recreation facility and program decisions. An area with more people per household figure can be an indication that an area is comprised of families with children and thus could justify family or youth-oriented recreation facilities. Conversely, an area with less people per household figure may require recreation facilities more favorable to singles or the elderly.

In 2010, Milford Township had 3,224 households and 2.97 people per household. By 2021, the number of households had risen to 4,147 but the people per household decreased to 2.53. The SEMCOG Regional Development Forecast projected this to remain steady through 2050. Comparatively, the Village had 2.51 people per household in 2021.



Chapter 2.

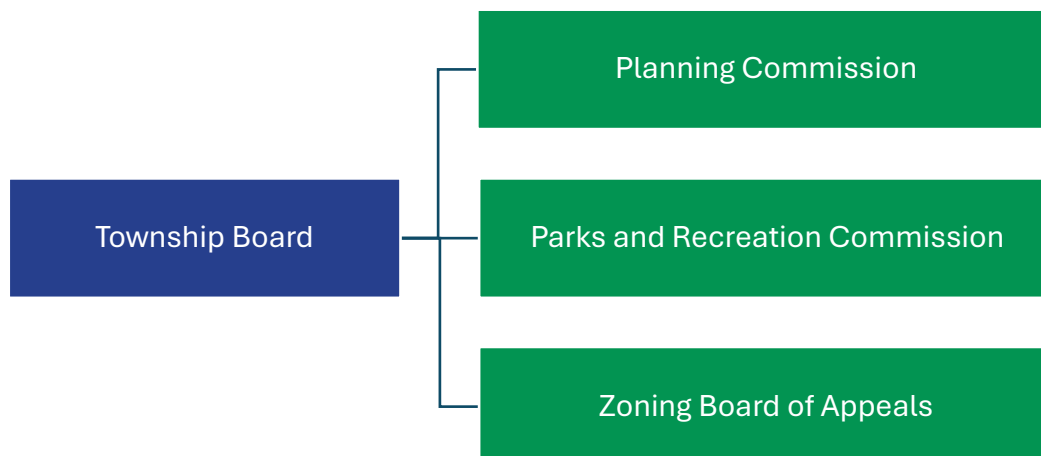
Administrative Structure



This section of the Parks and Recreation Master Plan describes the administrative hierarchy within the Township as it relates to parks and recreation decision-making and governance. Additionally, Township expenditures and revenues are described as well as relationships the Township has with other agencies such as the Village, schools, Huron Clinton Metropolitan Authority, or Oakland County.

Public Act 156 of 1917, Local Government, Operate System of Public Recreation, empowers Michigan cities, villages, counties, school districts and townships to create and operate local recreation facilities and recreation systems. The Act states that a city, village, county or township may operate a system of public recreation and playgrounds, acquire, equip and maintain land, buildings or other recreation facilities, employ a superintendent of recreation and assistants and vote and expend funds for the operation of the systems.

The Charter Township of Milford is a traditional Township organizational structure with a Township Supervisor, Treasurer, Clerk and a Township Board consisting of four trustees. Township staff is relatively small with seven full-time employees. Police service is contracted to the Township from the Village of Milford. The Milford Fire Department is also a jointly operated service, contracted to the Village from the Township, and includes a full time Fire Department.



Parks and Recreation Commission

On September 19, 2001, the Milford Township Board of Trustees appointed a five member Parks and Recreation Commission for the first time to serve in an advisory role to the Township Board and Supervisor in regard to recreation within the Township. Since that time, the Commission has developed and adopted bylaws to provide procedural guidelines for the Parks and Recreation Commission. The bylaws dictate that the Commission shall not exceed 13 voting members. A Commission members terms is for three years, and they serve at the pleasure of the Township Board. A Chairperson, Vice-Chairperson and Secretary are elected at the first meeting of each year. The Parks and Recreation Commission holds regular meetings on the 3rd Monday of each month at 7:00 pm.

In September 2006, the Parks and Recreation Commission adopted a Mission Statement to guide their progress and direction as follows:

The mission of the Milford Township Parks and Recreation Commission is to work with public and private partners to provide recreational facilities and activities to its residents and visitors.

Village of Milford

The Village and Township work closely together on many governmental and civic issues. Major cooperative efforts include the shared administrative offices, as well as police and fire services. In terms of the provision of recreation, the Village and Township interact on a project-by-project basis to provide support, share resources, plan events, etc. In the past, the Township has provided financial assistance for summer entertainment programs, the playscape, tennis courts, basketball courts, skate park, mountain bike trail, and various improvements at Central Park including restroom facilities and amphitheater and the restoration efforts at the Ford Powerhouse. More recently the Township has assisted with the redevelopment of Central Park.

Role of Volunteers and Organizations

The Township currently doesn't have many volunteers participating in Parks and Recreation. The YMCA and Community Choice Credit Union partner together on some events. The Township will continue to identify other volunteer opportunities.

Relationships with School Districts and Other Public Agencies Involved in Recreation

Many residents rely on local school districts for recreational amenities. Please refer to the Recreation Inventory Chapter below for the School Districts and Other Public Agencies Involved in Recreation in Milford Township.



Milford Township Fiscal Analysis

The annual budget is prepared by the Township Supervisor and adopted by the Township Board with subsequent amendments approved by the Township Board. The fiscal year for Milford Township's budget runs with the calendar year of January 1st through December 31st each year. The majority of the Township's expenditures consist of police, fire, and general governance with the largest revenues coming from the police and fire millages as well as property taxes.

The budget below reviews expenses associated with operations of the Parks & Recreation Commission and event expenses related to hosting special events like the summer concert series. In addition to the parks allocation from the general fund, there is a millage to support maintenance of the Kensington-Milford Trail that is set to expire in 2024.

Table 2: Fiscal Analysis

GI Number	Description	Original Budget	Estimated Budget				
		2024	2025	2026	2027	2028	
Dept 750 - Parks and Recreation							
101-750-704.000	P&R Commissioners Salaries	14,000	14,000	14,000	14,000	14,000	
101-750-704.001	Recording Secretary	1,780	1,780	1,780	1,780	1,780	
101-750-805.000	Parks & Rec Projects	10,800	10,800	10,800	10,800	10,800	
101-750-805.003	Summer Concert Expenditures	10,000	10,000	10,000	10,000	10,000	
101-750-931.001	Screen Repairs & Equip Updates	5,000	5,000	5,000	5,000	5,000	
101-750-934.000	Parks & Rec Repair & Maintenance	1,000	1,000	1,000	1,000	1,000	
Net of Revenues/ Appropriations - 750 - Parks & Recreation		(42,580)	(42,580)	(42,580)	(42,580)	(42,580)	
Estimated Revenues - Fund 101							
Appropriations - Fund 101		42,580	42,580	42,580	42,580	(42,580)	
Net of Revenues / Appropriations - Fund 101		(42,580)	(42,580)	(42,580)	(42,580)	(42,580)	
Beginning Fund Balance							
Ending Fund Balance		(42,580)	(42,580)	(42,580)	(42,580)	(42,580)	

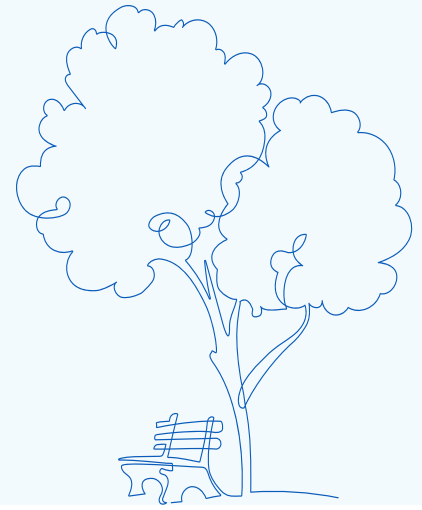


intentionally left blank



Chapter 3.

Recreation Inventory



An inventory of recreation facilities, programs and events is an essential component of a Recreation Master Plan. The inventory provides a base of information to use in developing the goals, objectives, and capital priorities as well as assists in the future decision-making process. This section of the plan includes several components, including a recreation inventory map and table, which provides a general overview of all facilities found within the Township including those operated by the schools, Village, County, State, Huron-Clinton Metropolitan Authority, and various regional entities. Another component of this chapter is a description of the recreation programs and events available to Township residents, offered by a variety of entities. To aid in identifying potential open space areas for preservation, an inventory of existing open spaces and potential natural areas (as identified by Oakland County) within the Township is also provided. Milford Township has been designated as a trail town.

Milford Township is home to an exceptional network of state and regional parks and recreation facilities. In and around Milford Township there are thousands of acres of developed and undeveloped recreation space under the administration of Oakland County, the Huron-Clinton Metropolitan Authority, the Village of Milford, two school districts, the City of Dearborn and the State of Michigan. In Milford (Township and Village), there are approximately 4,420 acres of land that are parks under various ownership (excluding water). Parkland comprises nearly 20% of the total area of the community (Township and Village). Currently, Milford Township itself only owns the Milford-Kensington Trail Connector that opened in 2009.

The primary recreation facilities in Milford Township serve to not only provide recreation opportunities, but also to conserve and protect one of the most integral natural features of the Township, the Huron River. The Huron flows east to west through Milford Township, meets and crosses the Village of Milford, and then turns southwest as it flows into Green Oak in Livingston County. With the exception of a few hundred feet of river frontage, the entire length of the Huron River within the Township resides in public land. This rare amenity sets Milford Township “ahead of the curve” with regard to recreation facilities.

In addition to those amenities associated with the Huron River, the Township benefits from a series of other significant local and regional facilities. These, in combination with the Huron River and its amenities, provide an established base upon which the Township will be able to focus future recreation facility development. The following section describes the existing facilities serving the residents of and visitors to Milford Township. This inventory was updated by McKenna from previous years plans.



Recreation Areas

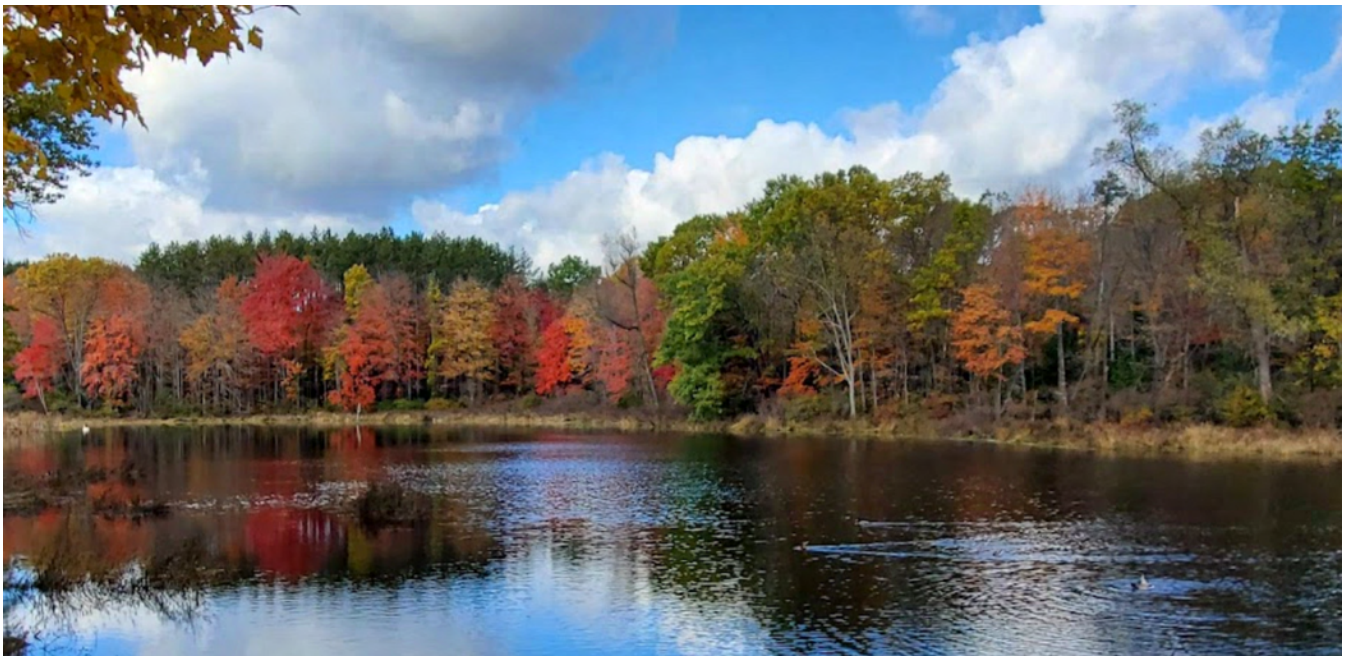
Milford Township contains portions of two significant State Recreation Areas within its boundaries: Proud Lake and Highland Recreation Areas. In addition, Island Lake State Recreation Area is located just south of the Township. These facilities are owned, operated and maintained by the Michigan Department of Natural Resources. A Michigan State Park motor vehicle permit is required at all State Parks and Recreation Areas.

Proud Lake State Recreation Area

The Proud Lake State Recreation Area, located in Milford and Commerce Townships, provides over 1,100 acres of outdoor recreation area within Milford Township, and more than 4,700 acres overall.

This State Recreation Area benefits from a full complement of passive and active recreation opportunities and has a comprehensive list of amenities for its visitors. Perched along the banks of the Huron River at its confluence with Norton Creek and Proud Lake, this park's programming and attractions are primarily structured around its natural features. The park also contains the ancient Chief Pontiac Trail as well as many other rustic trails and approximately 20 miles of shared trails, used primarily by the mountain bikers, hikers, and the equestrian community. Camping, hunting, boating, horseback riding, swimming, hiking, mountain biking, snowmobiling, cross country skiing, and fishing are the most popular draws of the park. Its strategic location in Milford and Commerce Townships allows it to cater to the residents of Wayne, Washtenaw, Oakland and Livingston Counties, all within a short drive. Due to the efforts of the Michigan Department of Natural Resources, the Proud Lake State Recreation Area boasts a significant trout fishery in Southeast Michigan, has stocked rainbow and brown trout, and has a variety of warm water sport fishing species. The park is notable amongst Southeast Michigan anglers for its special early trout season, which allows the opportunity to fish, observing catch-and-release regulations, for a month prior to the state-wide trout season opening day.

Organizational camping on two rustic campgrounds, public camping on 130 modern family campsites, canoeing and beach activities also make the Recreation Area a popular place for overnight stays as well as day visits. Interpretive walks and other guided nature activities and outdoor education events are scheduled throughout the season here. The park also includes an area dedicated to horse staging as well as an extensive network of equestrian and hiking trails that lead directly to Kensington Metropark. Seasonal hunting is also allowed in specified areas. Finally, this park contains the Michigan Civilian Conservation Corps Proud Lake administrative office and a residential camp



Highland Recreation Area

The Highland Recreation Area is an approximately 5,900-acre Recreation Area which lies almost entirely within Highland and White Lake Townships, except for a small portion of the park containing the southern half of Moore Lake, which lies in Milford Township. The Highland Recreation Area is a primarily unimproved natural area in which seasonal hunting, fishing, boating, mountain biking, cross country skiing, swimming, boating, snowmobiling, rustic camping, equestrian activities, and field dog trial areas are supported.

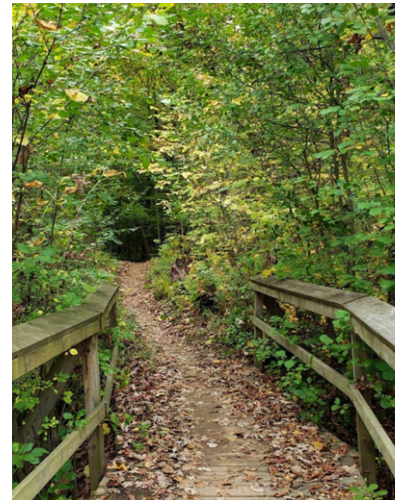
The Recreation Area is most notable for its 17 miles of trails for hiking and cross-country skiing, 16 miles of trails dedicated to mountain biking and 12 miles of bridle trails for horse riding. In addition, a horse stable is available with a staging area and horse camping is permitted at the rustic campsites. The predominant character of this park is undisturbed open space, wetlands, marshes and wooded areas, compromised only by minor gravel roads and trails.



Island Lake Recreation Area

Located at the southwest corner of Milford Township is the Island Lake State Recreation Area. Abutting Kensington Metropark, this State Recreation Area contains over 4,000 acres of space, primarily in Livingston County. The park serves to continue the substantial natural area surrounding the Huron River begun upstream by Proud Lake State Recreation Area and Kensington Metropark. This area completes a chain of parks that essentially provide public access and conservation and recreation area on the banks of the Huron River for the entirety of its flow through Milford Township.

Touted by the Michigan Department of Natural Resources as providing an “up north” experience in Southeast Michigan, Island Lake does not have any modern camping sites or significant man-made facilities. A small playground, restrooms and some athletic fields supported by a concession stand comprise most of the limited improvements. However, the beaches, hiking (18 miles), biking (4 miles paved), mountain biking (14 miles), hunting and fishing opportunities (including a universally accessible fishing pier) make this a valuable resource. The park also includes an archery range, cross country skiing and snowmobiling on unpaved portions of the trails. Island Lake is the only balloon port in the state park system. Balloons usually take off in early morning or late evening, depending on weather. The most significant facility built in the park is the Island Lake Shooting Range, considered one of the most safe and modern in the United States. This shooting range was developed with sound abatement technologies that keep outside disturbance at a minimum. In addition, the quiet, natural feel of the Recreation Area is further enhanced by a year-round ban on off-road vehicles.



Huron-Clinton Metropolitan Authority

The Huron Clinton Metropolitan Authority (HCMA) is an organization serving the counties of Wayne, Oakland, Macomb, Washtenaw and Livingston. Created in 1940 and funded by taxpayers and access fees, the HCMA has developed 13 Metroparks in Southeast Michigan that combine to cover over 24,000 acres and serve approximately 7.3 million people annually. The HCMA is named after the Huron and Clinton Rivers, around which their facilities are structured. The network of Metroparks around Southeast Michigan provides a unique set of public, natural conservation areas that stretch almost continuously across the region. Significant efforts have been made by the Metroparks and the communities in which they are located to develop an interconnected non-motorized trail network connecting the Metroparks to one another and to State, County and city, village or township parks.

Kensington Metropark

Consisting of 4,481 acres, Kensington Metropark serves as the HCMA Headquarters and is second in size only to Stony Creek Metropark of all 13 of the system's parks. Due to the large area, extensive programming and long list of amenities, Kensington Metropark, located almost entirely within Milford Township, is a major recreation destination for the entire southeast Michigan region and serves over 2.5 million visitors a year.

Kensington Metropark surrounds Kent Lake and takes full advantage of this amenity by providing two beaches with swimming, and two launching ramps and a boat concession, offering paddleboats, rowboats, canoes, and kayaks for visitors. The Island Queen II is a 37-passenger pontoon boat offering excursions during the summer months. Picnic shelters for large events, group camping facilities, an 18-hole golf course, a 27-hole disc golf course, a wide variety of pier and boat fishing opportunities, horse and hiking trails and cross-country skiing and tobogganing in winter months are all located within the park. There are 11.9 miles of paved trails, a 20-station fitness trail, 19 miles of marked equestrian trails and 7 miles of unpaved hiking trails near the Nature Center (mountain biking is prohibited). The Nature Program includes wildlife exhibits, ranger-lead educational trips, and self-guided nature walks on exclusive nature trails. A staff Park Naturalist at the Nature Center Building is a valuable asset and will provide guidance and information for day trips for families, individuals or group events. The park also includes the Farm Learning Center, offering interpretive displays, a petting farm, and group hay/sleigh rides. Ice skating with a food bar is offered during the winter months along with ice fishing and cross-country skiing. Splash 'n' Blast is the most recent addition to Kensington with two, 250-foot twisted waterslides and a water spray area with cannons, palm trees and serpents that spray water.

The HCMA-owned property between Milford Road and the Proud Lake Recreation Area (also referred to as the Sidney Waldon Parkway) is also part of Kensington Metropark and includes hiking and equestrian trails. The Chief Pontiac Trail connects Proud Lake State Recreation Area and Kensington Metropark.



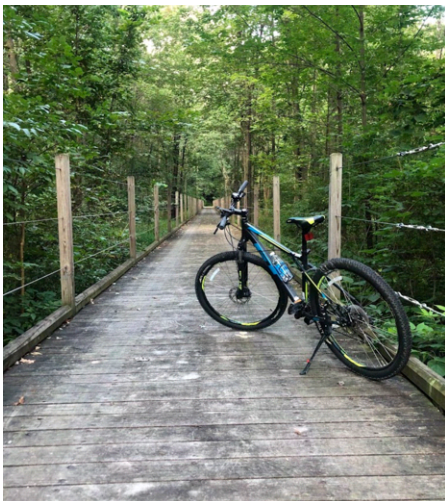
Oakland County Parks

By virtue of Milford Township's location within Oakland County, the residents of the Township have access to the Oakland County Parks System. Oakland County Parks encompass over 6,000 acres of recreation area, and its 13 sites include parks and golf courses providing a wide range of services and programs. Attention to special needs residents, seniors and children alike have positioned the Oakland County Parks as essential community amenities.

Lyon Oaks

Lyon Oaks County Park, the closest county park to Milford in the Oakland system, is owned and operated by the Oakland County Parks Department and is located along Pontiac Trail, adjacent to Milford Township on its southern border immediately east of Old Plank Road. Located within Lyon Township, Lyon Oaks Park is 1,041 acres in area, and contains an 800-acre wetland preserve and an 18-hole Arthur Hills-designed golf course.

Dog owners may take advantage of a 13-acre fenced in Dog Park in which they may run dogs without a leash. Sports fields, including a cricket pitch that shares the soccer fields, are available along with restrooms, picnic areas, hiking trails and a nature interpretation center. The Lyon Oaks Golf Course offers banquet and meeting facilities as well as a clubhouse and driving range. The course has been designed to be friendly to beginners, with 5 tee sets of yardage tees, but long and complex enough to challenge experienced golfers, which make it a unique and ideal course for groups varying in ability or experience.



Camp Dearborn and Mystic Creek Golf Club

Camp Dearborn is a 626-acre park located immediately west of the Village of Milford between Commerce Road and General Motors Road. Camp Dearborn was originally founded in the 1940's as a rustic vacation space for the residents of Dearborn, Michigan, located approximately 30 miles southeast of Milford Township. While the Township has seen a great deal of development since that time, Camp Dearborn has remained intact and continues to be owned and operated by the City of Dearborn. The City also leases approximately 260 acres of the property to the Mystic Creek Golf Club. The course has 27 championship holes, driving range, putting green, adventure golf, and clubhouse/banquet center.

Camp Dearborn is open to the general public, although rates are reduced for use of the park, camping facilities and golf for residents of Dearborn, Milford Township, and the Village of Milford. A variety of sports fields and courts, fishing ponds and picnic facilities are popular in the camp. RV camp sites are available along with restroom/shower facilities and a selection of sites are pet friendly. In recent years Resort Cabins have been constructed and are available to rent.



Mystic Creek Golf Club

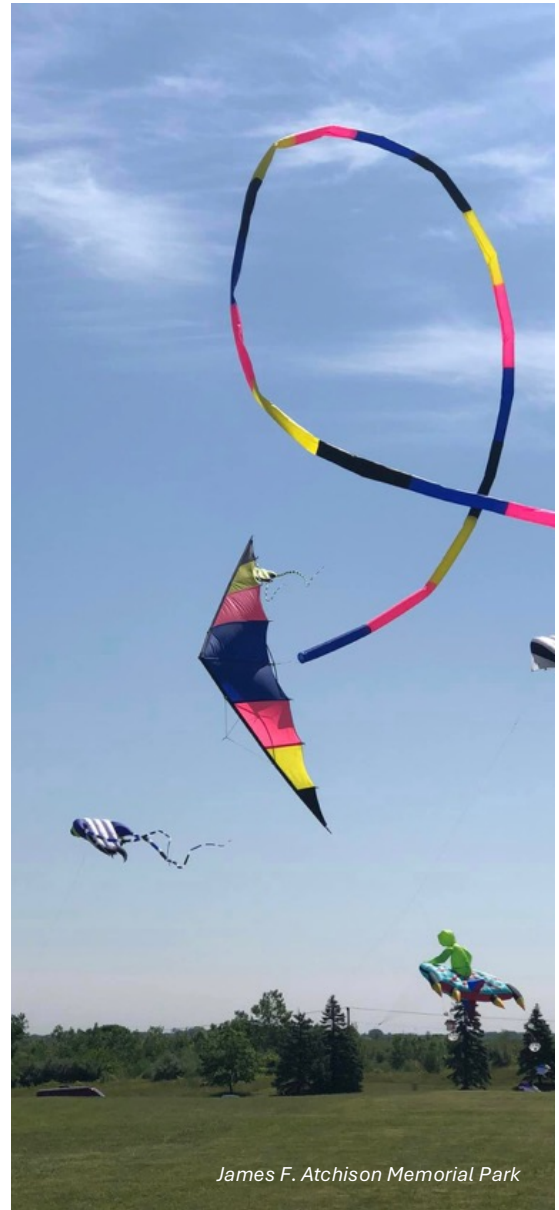


Camp Dearborn



James F. Atchison Memorial Park

The James F. Atchison Memorial Park (formerly Lyon Township Community Park) is a 120-acre park located in Lyon Township along Grand River Avenue, just south of Milford and I-96. The park includes several soccer fields, tennis courts, baseball fields, play-ground, basketball court, open space, and a paved trail.



James F. Atchison Memorial Park



Non-Motorized Systems

A widespread effort has been emerging in the State of Michigan to identify opportunities and develop non-motorized trails and trail networks throughout and between communities and various destinations. Partnerships between individual cities, village and townships, county governments, regional entities, and non-profit regional trail development organizations have produced comprehensive trail networks in many areas throughout Michigan including the Milford community. Oakland County has led the way for this growing movement by providing planning services, funding and County resources toward the construction of a trail network within its boundaries, taking advantage of the lakes and rivers of the county and connecting to those networks present or under consideration in adjacent counties.

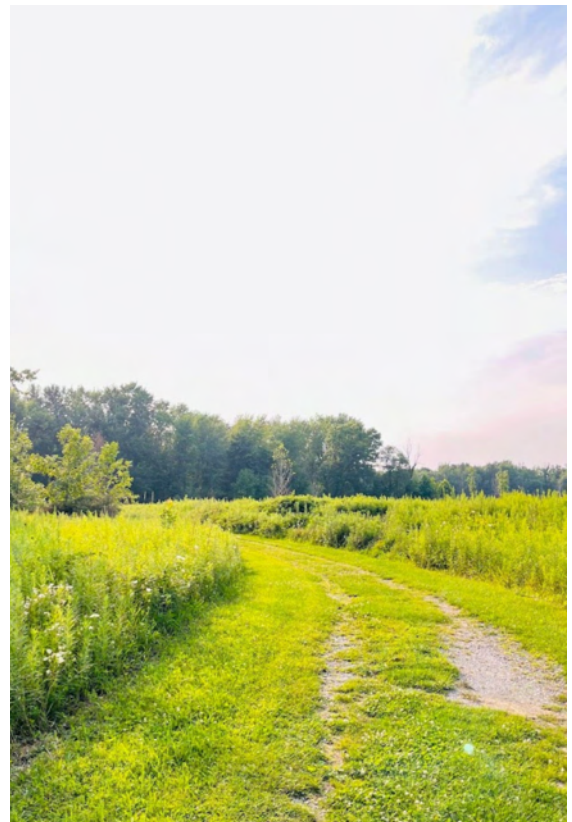
Western Oakland Trailway Management Council

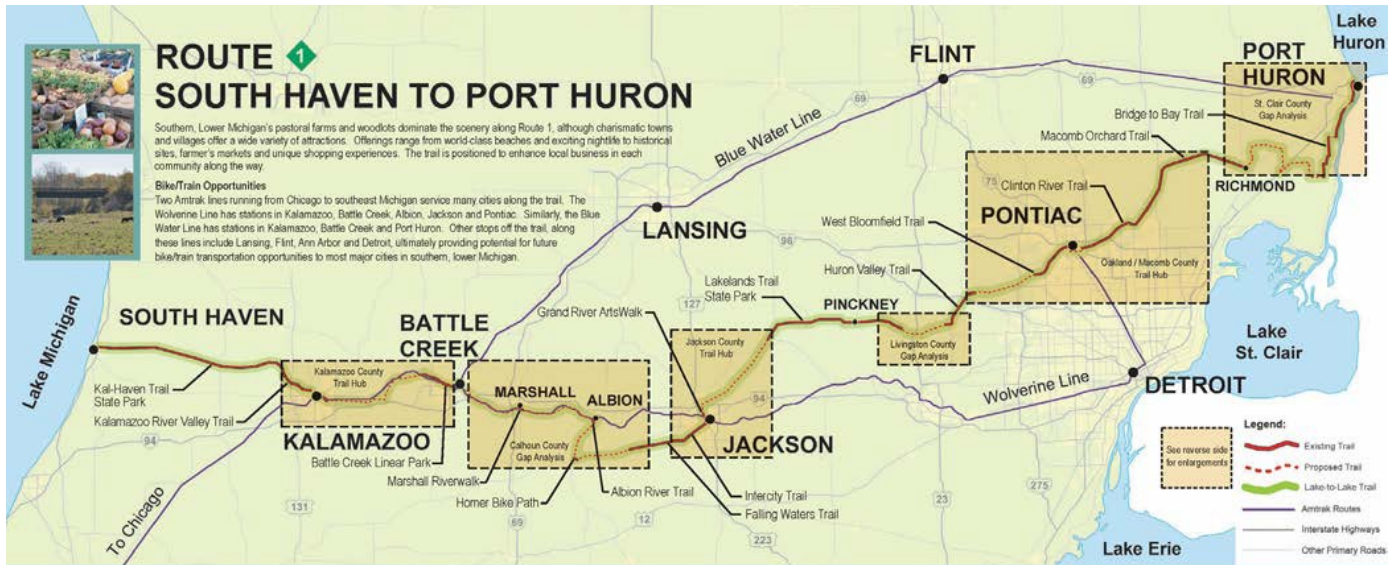
Milford Township is a participant with the Western Oakland County Trailway Management Council (formerly the Southwest Oakland County Trailway Management Council). The Council, formed in 1997, is an organization consisting of representatives from the City of South Lyon, Lyon Township, Milford Township and the Huron Clinton Metropolitan Authority. Several members of the Council were the founding members of a larger entity which was called the Southwest Oakland County Trailway Management Council and began in the early 1990's. The SW Oakland County Trailway Management Council was the driving force behind the planning for the Huron Valley Trail. Once implementation on the Huron Valley Trail moved forward, a new group called the Western Oakland Trailway Management Council formed and consisted of only those communities prepared and able to move forward.

The Western Oakland Trailway Management Council is dedicated to developing and maintaining trail networks within its member communities to connect their neighborhoods and town centers as well as link to the regional trail networks. The Western Oakland County Trailway Management Council works closely with the Michigan Department of Natural Resources, Michigan Department of Transportation and the Road Commission for Oakland County to maintain the Huron Valley Trail and other trail efforts within the communities.

Michigan Air Line Trail

Completed in 2023 — an exemplary Rail-Trail, The Michigan Air Line Trail has been in development, design and construction since 2009. Stretching for over seven miles through three western Oakland County communities, the Michigan Air Line Trail was built on the foundation of the historic Air Line/Coe railway. Back in the 19th century, a railroad visionary conceived of a railroad that would extend from Toronto, Ontario to Chicago, Illinois — and would follow as straight a route as was possible — "like a bird would fly along in an air line." The Michigan Air Line Trailway Management Council meets publicly each month to discuss trail management priorities, trail events and other developments. The meeting site rotates between Commerce Township and Wixom City Hall, but generally takes place on the 2nd Wednesday of the month, at 3pm. Members of the public are welcome to attend monthly Trail Council meetings.





Source: *The Great Lake-To-Lake Trails*

Oakland County Trails Water and Land Alliance

Oakland County Trails, Water, and Land Alliance formed out of the merger of the Oakland Trails Advisory Council and Oakland County's Natural Area Advisory Group. OCTWLA works to develop trails and protect natural areas within Oakland County. The initiative has evolved from local visions and been applied countywide. OTAC originally envisioned an interconnected trail system throughout the region. As of 2018, 131 miles of trails in Oakland County have been completed, 24 miles are in detailed planning/design/development stage, 135 miles are under consideration, and 106 miles of trails are under review/study.

To assist in the planning efforts of creating a connected system, OCTWLA have developed a map that is continuously updated to illustrate the vision and to depict completed and planned segments. In 2008, Oakland County adopted its Oakland County Trails Master Plan. A number of corridor opportunities have been identified in and around the Milford community.

To the east of Milford Township, the trail system is planned to traverse Wixom, Commerce Township, Wolverine Lake and into Orchard Lake, West Bloomfield Township, and Keego Harbor leading into Pontiac and then the Clinton River Trail and Paint Creek Trail. Once fully completed, this comprehensive trail network will be a model of trail development and planning within the State of Michigan and for urban counties nationwide.



OAKLAND COUNTY PATHWAY CONCEPT



- Trail
- Complete
- Design/Development
- Under Consideration
- Under Review
- Municipal Boundary
- County Parks
- HCMA Recreation Land
- State Recreation Land

*The county pathways system is comprised of a vision to link pathways and greenways throughout Oakland County and Southeastern Michigan. The county concept envisions a hierarchy of pathways consisting of primary and secondary pathways.

June 2008



Sources
 Roads: Oakland County GIS, 2008
 Trail Network: Oakland County GIS, 2008
 Recreation Lands: Oakland County GIS, 2008



OAKLAND COUNTY TRAILS MASTER PLAN





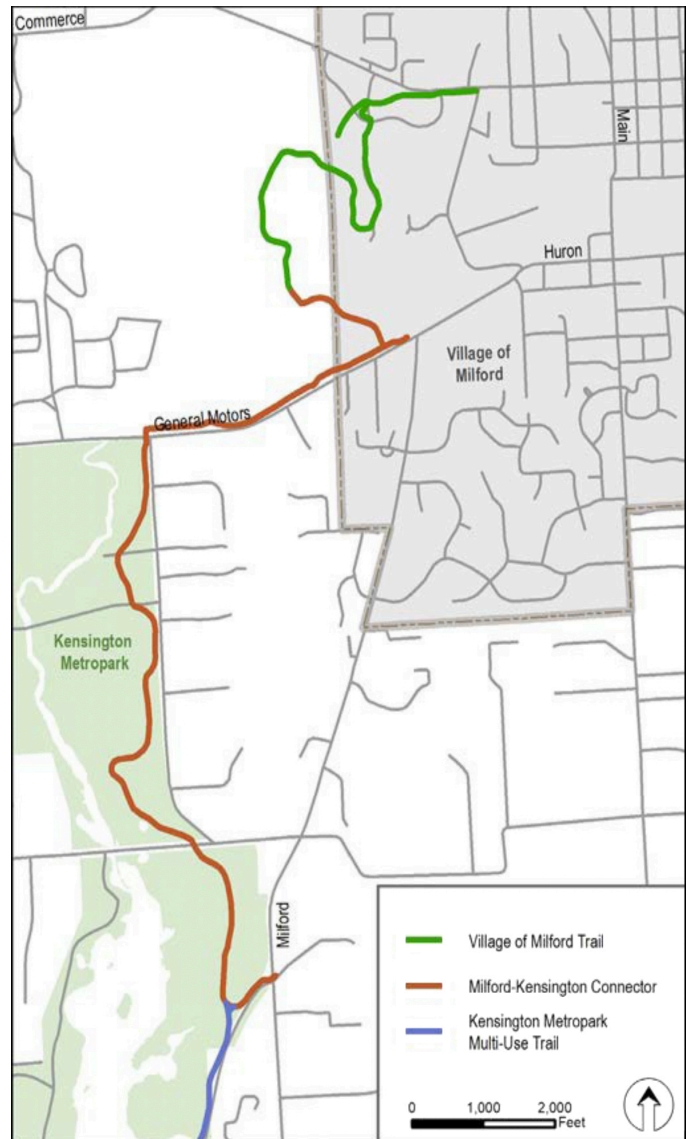
Milford-Kensington Trail Connector

Milford Township adopted its first Recreation Plan in 2002, identifying the design and construction of a non-motorized trail from the Milford dam to Kensington Metropark as a top priority. Following the adoption of the Recreation Master Plan, the Township secured over \$2.6 million in funding and passed a millage to fund a significant portion of the construction costs of the project (formally referred to as the Milford to Kensington Metropark Trail, project number TF-06-074). The Township was successful in obtaining funding assistance from the Community Foundation for Southeastern Michigan, MDOT, and MDNR.

The trail is approximately 3 miles in length and was completed in 2009. The 10-foot-wide trail traverses HCMA property and connects Kensington Metropark to the Milford Dam. To minimize wetland impact, the trail features five timber boardwalks over three separate wetland areas.

Village of Milford Trail

The Milford Trail was finished in 2009 with the completion of the Milford-Kensington Connector to downtown Milford. The Village section of the trail connects the Milford Dam north around Hubbell Pond Park through a densely wooded area to the YMCA, Commerce Road, and the Milford Library.



YMCA

The Carls Family YMCA was constructed in 2002 as part of the YMCA of Metropolitan Detroit. Located in the Village of Milford the “Y” attracts a high membership base and provides exercise, pool, instructional and other health facilities for the residents of the community.

The building contains a series of pools including a shallow, warm water children’s pool, a lap and diving pool, a two-story waterslide, and another general activity area. A large gymnasium, with dividers and striping for volleyball, basketball and other indoor sports as well as an activity room with wood floors and wall-to-wall mirrors for dance and aerobic instruction. The YMCA also brings to the Town- ship an array of summer, recreational and educational programs for member families. Day camps, sports leagues, classes on many different activities and exercise and sports clinics are available for members.

Huron Valley School District

The Huron Valley School District encompasses eight elementary schools, three middle schools, two high schools and one alternative high school and services Highland, Milford, White Lake and Commerce. The majority of Milford Township lies within the Huron Valley School District boundaries. There are 3 schools within Milford with Milford High School located just north of the Township on Milford Road.

Huron Valley Recreation and Community Education

The Recreation and Community Education department strives to offer lifelong learning opportunities to meet the needs of Huron Valley Schools’ residents and neighbors. Program staff include teachers, professionals and instructors who are specialists in their chosen field. Annually, 125 part time instructors lead over 500 youth and 1200 adults in various classes / workshops. Each season, a variety of classes for youth through adult including computers, fitness, arts and crafts, enrichment and more, are offered.

Milford High School

Located on S. Milford Road in Highland Township, school enrollment is approximately 1,583 students (‘20-’21). Milford High School has 9 acres of outdoor active recreation area which contain sports fields for baseball, softball, tennis, football, track and soccer. In addition, the high school has a full gymnasium and associated parking. These facilities are used by high school league play for students and for general community use. Milford High School also contains a state-of-the-art theater. The theater, known as the Milford High School Center for the Performing Arts, holds approximately 650 people. The school also includes a competitive pool. The pool and fitness facilities were constructed with bond funds approved in 2001. It is operated by the School District.

Muir Middle School

Muir Middle School is located on George Street in the Village of Mil- ford and includes approximately 579 students (‘20-’21). Muir Middle School (16.3 acres) includes a general play area and is supported by two ball fields, a soccer field and gymnasium.

Johnson Elementary School

Johnson Elementary School is located on General Motors Road and has an enrollment of approximately 250 students (‘20-’21). The school (14.7 acres) includes a baseball field, basketball and soccer fields or courts, as well as general outdoor play area and various play equipment. This school also has a gymnasium for indoor activities.



Kurtz Elementary School

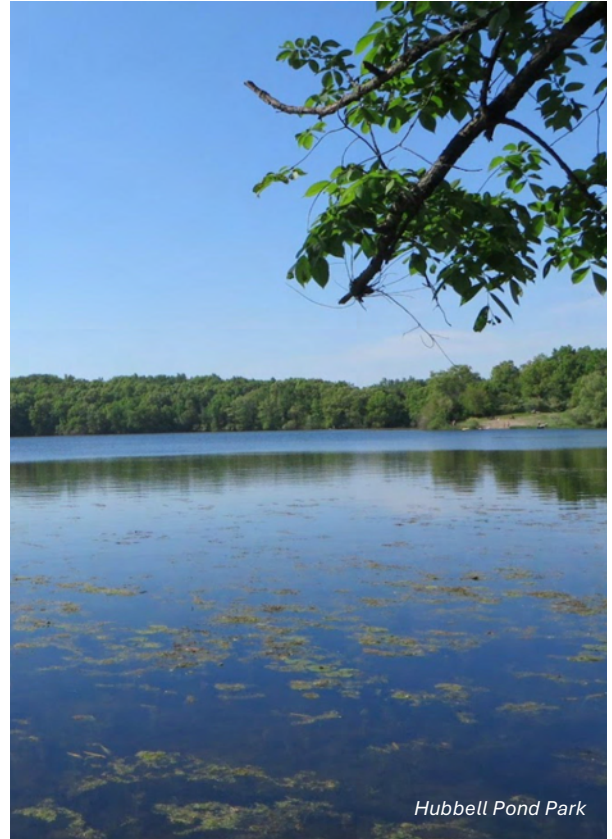
Kurtz Elementary School is located on Kurtz Drive and has a student enrollment of approximately 275 students ('20-'21). Kurtz School (12.6 acres) includes area for baseball, basketball and soccer. Like the other Milford area schools, Kurtz also has a gymnasium (for rental) and a general outdoor play area with playground equipment.

In addition to the schools located in Milford, Milford students also attend Lakeland High School, Oak Valley Middle School, Heritage Elementary, and Country Oaks Elementary, depending on where they live in the community. Oak Valley Middle School and Country Oaks Elementary School are located just east of Milford Township in Commerce Township on a shared complex. These facilities should be connected via non-motorized trails west into the Village of Milford.

Village of Milford

The Village of Milford operates and maintains six parks within the municipal boundaries including:

- » **Hubbell Pond Park (150 acres)** (leased for 99 years from the HCMA and overlaps to the west into Milford Township). The Hubbell Pond Park site, located on the north side of the Mill Pond in the western portion of the Village, is largely undeveloped, but does feature walking trails, mountain bike trails, four ballfields, and a picnic shelter. The site is also home to the Milford Public Library and Carls Family YMCA. The Milford Trail connector was completed in 2009 and connects the Milford Dam and Kensington Metropark to Hubbell Pond Park, the YMCA, Library and downtown Milford.
- » **Central Park (12 acres)**. Central Park is located on the north side of the Mill Pond/Huron River in the center of the Village, within walking distance of the downtown district. The park includes a community built playscape, a tennis court, two basketball courts, canoe launch area, sand volleyball court, and special event pavilion, picnic areas and restrooms. The LaFontaine Family Amphitheater and a Veterans' Memorial is also located in the park. In 2015 the Village Council adopted the Central Park Plan which aims to guide development over the next 10-20 years.
- » **Southside Park (5 acres)**. This park is located between Huron Street and Washington Street, west of Main Street, south of the downtown area. The park features play equipment, horseshoe pits, remote control race car track, picnic tables, and an authentic log cabin.
- » **Fairgrounds Park (3 acres)**. Fairgrounds Park is located adjacent to the Milford Senior Center and municipal complex, south of Atlantic Street. The park is mainly an undeveloped natural area but does feature shuffleboard courts and a picnic area. The eastern portion of the park was developed with the Milford Skatepark in 2019.
- » **Arthur's Park (0.15 acre)**. This small park is located along Main Street, on the north side of the Huron River, across from Central Park. Although no active recreational facilities are present, the park features a butterfly garden and offers a walkway, benches and picnic table for visitors to enjoy the views of the river.
- » **Center Street (0.1 acre)**. This small urban park is located on the east side of Main Street in the downtown area. The park has a courtyard feel and features benches, a gazebo, and water fountain (fire feature in winter).





LaFontaine Family Amphitheatre in Central Park, Village of Milford

intentionally left blank





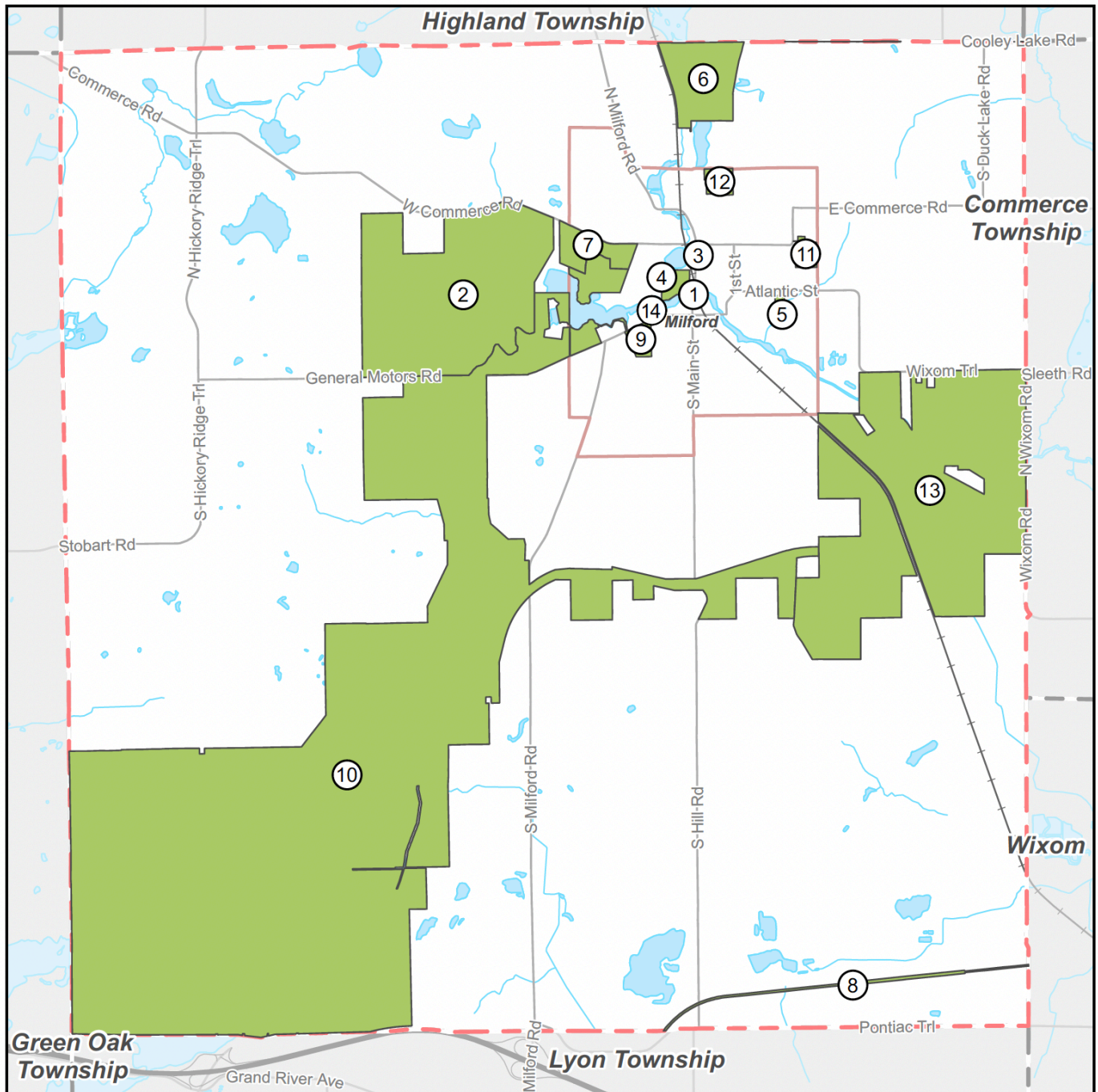
Table 3: Recreational Inventory

Name	Ownership	Acres (GIS)	Parking Area	Restroom	Open Space	Fishing	Hunting	Camping	Canoe/Kayaking	Equestrian Staging	Play Equipment	Picnic Shelter	Picnic Tables/Benches	Golf Course	Cross Country Skiing	Outdoor Ice Skating	Unpaved Trails	Paved Trails	Equestrian Trails	Mountain Bike Trails	Spray Park/Water Park	Gymnasium	Swimming Pool	Nature Center	Dog Park	Amptitheatre	Skste Park	Pergola	Soccer Field	Ball Diamond	Football Field	Track	Tennis Court	Basketball Hoop	Volleyball Court
Large Regional Park																																			
Camp Dearborn	City of Dearborn	625.0	X	X	X	X		X			X	X	X	X			X	X																	
Highland State Recreation Area	State of Michigan	5879.7	X	X	X	X	X	X	X	X		X	X		X		X		X	X															
Kensington Metropark	Huron-Clinton Metropolitan Authority	4029.3	X	X	X	X		X	X	X	X	X	X	X	X		X	X	X		X			X					2	5					4
Proud Lake State Recreation Area	State of Michigan	3033.1	X	X	X	X	X	X	X	X		X	X		X		X		X	X															
Community Park																																			
Central Park	Village	17.7	X	X	X	X			X		X	X	X			X		X								X				1			1	4	1
Hubbell Pond Park	Village	49.8	X	X	X	X						X	X				X			X				X			X			5					
Milford High School	School District	60.0	X	X	X																	X	X						2	6	1	1	8		
Neighborhood Park																																			
Johnson Elementary School	Huron Valley Schools	16.0	X	X	X						X		X									X							1	1				6	
Kurtz Elementary School	Huron Valley Schools	12.6	X	X	X						X		X									X							1	1				2	
Muir Middle School	Huron Valley Schools	16.8	X	X	X																	X							1	2					
Mini Park																																			
Arthur's Park	Village	0.2			X								X																						
Center Street Park	Village	0.1			X								X														X								
Fairgrounds Park	Village	4.5		X	X								X													X									
Southside Park	Village	2.0	X		X						X		X																						



Intentionally left blank





Recreation Inventory Map

Milford Township, MI

July 12, 2023



Basemap Source: Michigan Center for Geographic Information, v. 17a.
Data Source: Oakland County, McKenna 2023.

Label	Name
1	Arthur's Park
2	Camp Dearborn
3	Center Street Park
4	Central Park
5	Fairgrounds Park
6	Highland State Recreation Area
7	Hubbell Pond Park
8	Huron Valley Trail
9	Johnson Elementary School
10	Kensington Metropark
11	Kurtz Elementary School
12	Muir Middle School
13	Proud Lake State Recreation Area
14	Southside Park

LEGEND

- Township Boundary
- Village Boundary
- Recreation Facilities
- Major Streets
- Railroads
- Water Features
- Water Bodies

0 1,500 3,000
Feet



Barrier Free Analysis

A critical component in planning for recreation facilities is providing barrier-free access to accommodate the needs of visitors with physical and/or mental disabilities. Barrier-free access includes, but is not limited to, ensuring that adequate barrier-free parking spaces, sidewalks, trails, picnic tables, and playground equipment are provided for renovated or new recreational facilities. Standards from The Accessibility Checklist, a guidebook founded upon the Uniform Federal Accessibility Standards (UFAS) and the codes and standards of the Americans with Disabilities Act (ADA), were used to verify barrier-free compliance.

The MDNR Guidelines require that a barrier-free ranking be given to each facility for assessing its accessibility to people with disabilities. The assessment considers the accessibility of both the facilities themselves as well as the access routes to them. The following system, provided by the MDNR Guidelines for the Development of Community Park, Recreation, Open Space and Greenway Plans (01/27/06), was used to assess each park:

- » **Rank 1:** None of the facilities/park areas meet accessibility guidelines
- » **Rank 2:** Some of the facilities/park areas meet accessibility guidelines
- » **Rank 3:** Most of the facilities/park areas meet accessibility guidelines
- » **Rank 4:** The entire park meets accessibility guidelines
- » **Rank 5:** The entire park was developed/renovated using the principles of universal design

Accessibility

The U.S. Access Board is designated by the Americans with Disabilities Act (ADA) as the agency responsible for developing minimum accessibility guidelines to ensure that new construction and alteration of facilities covered by ADA are accessible and usable by people with disabilities. The Access Board has published the following guidelines that should be used by Access to Recreation applicants to determine the criteria they must exceed to achieve universal accessibility:

- » **2010 ADA Standards for Accessible Design:**
<https://www.ada.gov/regs2010/2010ADASTandards/2010ADASTandards.pdf>
- » **2012 Accessibility Guidebook for Outdoor Recreation and Trails:**
<https://www.fs.usda.gov/sites/default/files/AccessibilityGuide-Book.pdf>
- » **The National Center on Accessibility** is a collaborative program of Indiana University and the National Park Service and provides information on access for people with disabilities in recreation: <http://ncaonline.org/>

The only park that underwent this analysis for this plan is the trailhead to the Milford-Kensington Connector Trail since it is the only park and recreation area owned by the Township. This site has been assessed as a barrier-free facility with a rank of 1. Details of the analysis are on the following page.



Milford - Kensington Connector Trail

Overall Park Rating: 1

DESCRIPTION:

This 10-foot-wide paved non-motorized trail runs from the Milford dam to Kensington Metropark. The project was funded by a millage as well as funds from the Community Foundation for Southeastern Michigan, MDOT and MDNR.

AMENITIES:

- » Signage
- » Drinking Fountains
- » Timber Boardwalks (5)

Parking

- | | |
|---|---|
| N | Accessible parking spaces are provided and marked with international symbol of accessibility. |
| N | Accessible parking is as near to the parking entrance as possible. |
| N | Signs designating accessible parking spaces are 60 inches high. |

Play areas.

- | | |
|-----|---|
| N/A | There is an accessible route (60 inches wide) to the entrance of the play area with a slope no steeper than 1:16. |
| N/A | For playground equipment, at least one turning spaces provided on the same level as components. |
| N/A | Play area, surface is firm and stable (mulch, wood chips, sand and gravel are not accessible surfaces). |
| N/A | Where multiple swings and a swing bay are provided, one swing is located on an accessible route. |
| N/A | For court sports, at least one accessible route both sides of the court. |

Park amenities.

- | | |
|-----|---|
| N/A | Picnic table provide at least one wheelchair space for each 24 linear feet of usable table service perimeter. The isles between chairs and table are 3 feet wide. |
| N | Drinking fountain spouts outlets are a maximum of 36 inches of the finish floor or ground. |
| N | Safety is promoted by good street lighting. |
| N/A | Ramps are non-slip. |
| N | If public restroom facilities are present, there is at least one fully accessible restroom. |

Trails and Sidewalks.

- | | |
|-----|--|
| Y | There is a path of travel that does not require the use of stairs. |
| N | Bike paths are separate from pedestrian walkways. |
| Y | Sidewalks are free of obstruction, wide enough for wheelchairs, solid (not made of dirt) and have curb cuts. |
| N/A | All stairways feature railing and stair tips that are painted distinguish each step. |
| N/A | Handrails are provided on both sides of a ramp. |
| N | Accessible routes, connect all park amenities and coincide with general circulation pets. |





Programs and Clubs

There are a variety of programs and clubs available to Milford area residents including:

- » The **Huron Valley Soccer Club** offers organized soccer for girls, boys, and adults. The club utilizes fields at the Highland Township Community Park and practices at Kensington Metropark.
- » The **Huron Valley Youth Baseball & Softball League** is active within the community and offers instructional/recreational baseball and softball to Milford area youth. It is a volunteer-run organization and utilizes Janowski and Jay Cee Park Ballfields in the Village of Milford.
- » The **Milford Athletic Club** is a swim club in Milford that runs programming for adults from Huron Valley Pools and Milford High School.
- » The **Huron Valley Schools Community Education Department** organizes and offers a number of recreation-related programs throughout the year such as Counselor in Training, Outdoor Adventure Camp, Safety Camps, Tennis, Horseback Riding, gymnastics, cheerleading, flag football, swim classes, water aerobics, yoga, pilates, gardening, etc.

Additional opportunities include:

- | | |
|---|-----------------------------------|
| » Huron Valley Community Chorus | » Beautification Committee |
| » Huron Valley Council for the Arts | » Milford Amateur Radio Club |
| » Friends of the Milford Library | » Milford Masonic Lodge |
| » Huron Valley Moms' Club | » Rotary Club of Milford |
| » Village Fine Arts Association | » Zonta Club of Milford |
| » Girl/Boy Scouts | » Huron Valley Running Club |
| » Milford Garden Club | » Huron Valley Mountain Bike Club |
| » Milford Historical Society | » Huron River Watershed Council |
| » Proud Lake Trails Riders Association (Equestrian) | » Wolverine Sports Club |
| » Highland Trail Riders Association (Equestrian) | » Friends of Proud Lake |
| » Kensington Trail Riders Association (Equestrian) | » Heavner Canoe & Kayak Rental |
| » Huron Valley Equestrian Committee | » Village Canoe Rental |



Milford Senior Center

The Milford Township Senior Center is located on the Civic Center grounds, adjacent to the Village/Township offices. Its location makes it easy and accessible for area Senior Citizens. The Center has a Director and Activity Director who plan many outings and activities for older (50+) adults. Lunch is served daily, and a schedule of events can be mailed or picked up at the Center. The Highland/ Milford Transportation Program owns two vehicles to take area Seniors to doctor appointments as well as shopping trips.

Programs and Events

There are several programs and events sponsored and organized by various agencies and held in the community throughout the year.

Milford Winterfest/ Winter Event

The Milford Township Parks and Recreation Commission hosts Winterfest/ Winter Event every year at Downtown Milford's Central Park. The winter festival features a variety of events for all ages, including winter crafts, ice skating, winter games, and available snacks and hot cocoa.

Milford Memories Summer Festival

The Milford Memories Summer Festival is a three-day event held in August in downtown Milford. It includes an art fair with over 300 artists from around the country. The festival also includes music, events for all ages, a 5K & 10K Race, Pancake breakfast, food and beverages.

Milford Summer Concerts in the Park

A summer concert series is held Thursday evenings in Central Park's LaFontaine Family Amphitheater in downtown Milford. From June through August, community members can enjoy a variety of musical genres: from blues and swing music to bluegrass, big band, jazz, and rock and roll.

Milford Community Picnic

The Milford Township Parks and Recreation Commission holds a Community Picnic in the Spring and Fall of each year at Central Park. Food is available as well as various games, crafts, face painting, moon bounce and a movie in the park.

Labor Day 30K

The Labor Day 30K takes place every Labor Day Weekend, starting from Bakers of Milford Restaurant. Run by a Nonprofit Organization, the race offers a 30K Bike, 30K Run, 10K Run, 6K Run/Walk and a 1/2 Mile Kids Run.



Grant History

When preparing a Recreation Plan, the Michigan Department of Natural Resources requires that information be provided concerning grants that have been received in the past for acquisition or development of recreation facilities. In the past, Milford Township has received 1 grant for recreation facility development.

In 2006 Milford Township was granted \$400,000 from the Michigan Natural Resources Trust Fund, TF06-074, for the Milford to Kensington Metropark Trail. The project developed an approximately 2.9-mile non-motorized trail through Kensington Metropark to Milford Dam. In addition to the trail, the grant also supported construction of elevated boardwalks over wetlands and supported site restoration. The trail is in good condition and well-maintained. The trail is heavily used and is an asset to the community. The Self-Certification Report for this grant can be found in Appendix B.

Related Planning Efforts

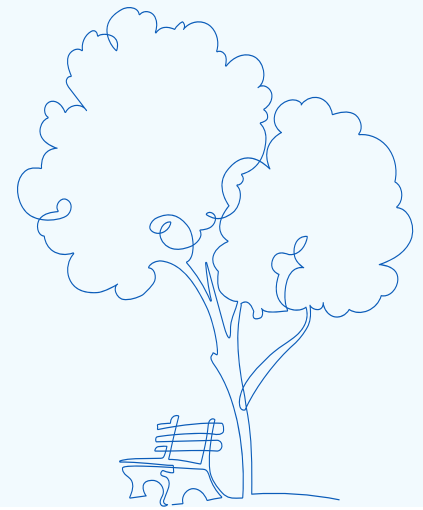
Understanding planning efforts that have occurred or are occurring in the area is essential when planning for recreation improvements within the Township. This is especially true in Milford where multiple entities are in control of recreation land and facilities. Below are the organizations that Milford Township should be aware of when making recreation plans and improvements:

- » Michigan Department of Natural Resources
- » Camp Dearborn
- » Village of Milford
- » Shiawassee and Huron Headwaters Resource
- » Preservation Project
- » Huron Clinton Metropolitan Authority
- » Oakland County Parks



Chapter 4.

Description of Planning Process



There are several factors that affect and impact the provision of parks and recreation facilities. This section analyzes and reviews the primary factors that have the potential to impact recreation planning within the Township over the next 5 years. The goals, objectives, and priority improvements are the result of the analysis presented here. A number of important factors contribute to the development of the Basis for Action section, including current trends, future planned improvements to facilities in the community, a comparison of existing facilities to acreage and facility standards, gaps in service areas, participation data in community recreation programs and the results of staff and community input. The Basis for Action contains several pieces of information and analysis, and when put together as a whole, begins to establish the need for various facilities within the Township over the next 5 years.

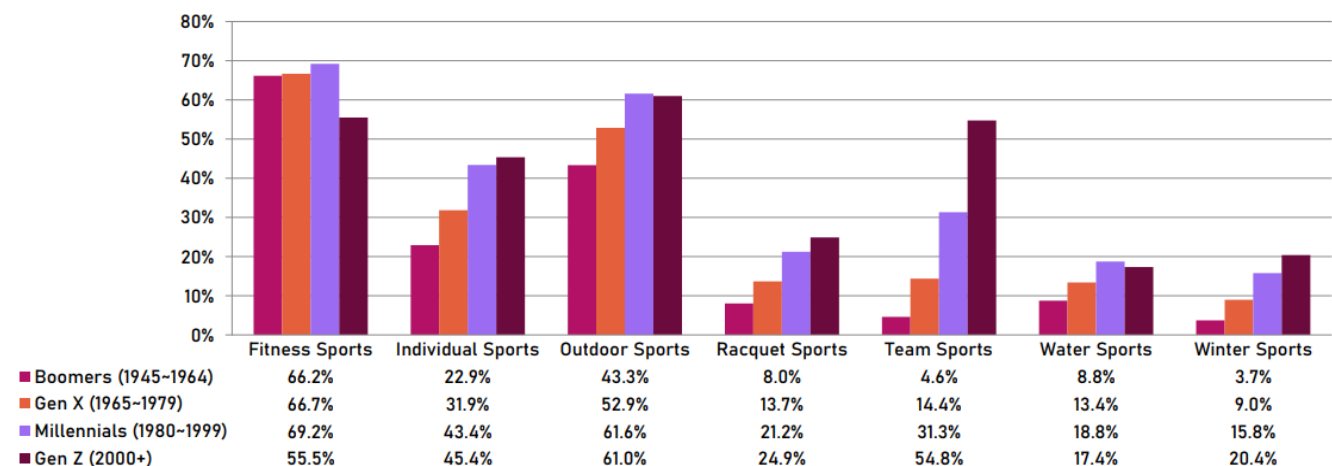
National Recreation Trends

Recreation trends occurring nationally provide insight into activities that can be expected to draw a large number of participants and how different age groups vary in the way they use recreation areas. The Physical Activity Council (PAC) released a 2022 Participation Report that tracked annual recreation participation data in the United States. The report found that fitness sports and outdoor recreation have garnered the greatest amount of interest in recent years.

The full report can be in the link below:

https://www.physicalactivitycouncil.org/files/uqgd/286de6_5f19558e506b4c1a88b2f010e53d928f.pdf

Figure: 2022 Participation by Generation



Source: The Physical Activity Council, 2022 Participation Report



National Planning Standards

In the process of determining and prioritizing needs, it is not only important to understand the national and local trends in terms of participation levels and popularity, but it is also imperative to compare the provision of local recreation facilities to published standards. This comparison of existing facilities to standard acreage and facility recommendations is another tool to determine needs within Milford Township. However, it should be noted that the latest available national standards were developed in the 1980's and 1990's and may not fully reflect today's needs and trends.

Acreage Standards

The National Recreation and Park Association provides a recommended park classification system which recognizes that open space has various functions. The system categorizes open space into various park classifications (see the table Recreation Classification System). The desirable characteristics relative to size, function, amenities and acreage provisions per 1,000 people (where available) are identified in the table.

Table 4: Recreation Classification System

Park Type	General Description	Location Criteria	Size Criteria	Acres/1,000 Population
Mini Park	Used to address limited, isolated or unique recreational needs	Less than a 1/4 mile distance in residential setting.	Between 2500 sq. ft. and one acre in size	0.25 to 0.5A
Neighborhood Park	Remains the basic unit of the park system and serves as the recreational and social focus of the neighborhood. Focus is on informal active and passive recreation.	1/4 to 1/2 mile distance and uninterrupted by non-residential roads & physical barriers	5 acres is considered min. size. 5 to 10 ac. is optimal.	1.0 to 2.0A
Community Park	Serves broader purpose than neighborhood park. Focus is on meeting community-based recreation needs, as well as preserving unique landscapes and open spaces.	Determined by the quality and suitability of the site. Usually serves two or more neighborhoods and 1/2 to 3 mile distance.	As needed to accommodate desired uses. Between 30 and 50 acres.	5.0 to 8.0A
Large Urban Park / Regional Metropolitan Park / Natural Resource Area	Serves broader purpose than community parks. Focus is on meeting community-based recreational needs, as well as preserving unique landscapes and open spaces.	Determined by quality and suitability of site. Serves entire community	As needed to accommodate desired uses. Minimum of 50 acres. 75 or more acres optimal for Urban Parks, over 200 + for Regional/ Metro Parks	5.0 to 10.0A

Source: National Recreation and Park Association

The Table **Classification of Milford Area Recreation Facilities** displays which parks fall into each classification system, along with its acreage. These classifications are helpful in determining service areas for members of the community. As the table illustrates, there is a significant amount of acreage within the Township and immediate surroundings that can be considered "Large Urban Park/Regional/Metropolitan Park/Natural Resource Area" land.

This includes Camp Dearborn, the HCMA properties, Lyon Oaks (just outside of Township), and State Recreation Areas. There is a significant number of passive recreation areas, camping, fishing, hiking, wildlife viewing, etc. available within the majority of these large regional parks.

For each park classification, the Table **Existing Recreation vs Public Standards** compares the area's existing park acreage against the recommended standard. The Township and Village rely heavily on one another for the provision of recreation and open space; thus, the table includes an analysis of acreage needed based on a combined 2021 population of 17,009. Utilizing all the acreage within the Township and Village, regardless of owner, it appears the Township contains sufficient



recreation acreage. **It should be noted however, that with the exception of maintaining the Milford-Kensington Metropark Trail, the Township owns and controls no recreation properties.** The Township relies primarily on the Village and School District to provide residents with active recreation areas. This becomes problematic when dealing with access, maintenance, scheduling, etc.

Table 5: Classification of Milford Area Recreation Facilities

Classification of Milford Area Recreation Facilities		Acres
Large Urban Parks Regional/ Metro Park/ Natural Resources Area	Camp Dearborn	626
	Kensington Metropark	4,481
	Proud Lake State Recreation Area	4,700
	Island Lake Recreation Area	4,000
Community Parks	Hubbell Pond Park	150
	Central Park	16.5
	Milford High School	56.1
Neighborhood Parks	Muir Middle School	16.3
	Johnson Elementary	14.7
	Kurtz Elementary	12.6
Mini Parks	Southside	1.6
	Fairgrounds	4.3
	Arthur's Park	0.2
	Center Street	0.1

Table 6: Existing Recreation vs Published Standards

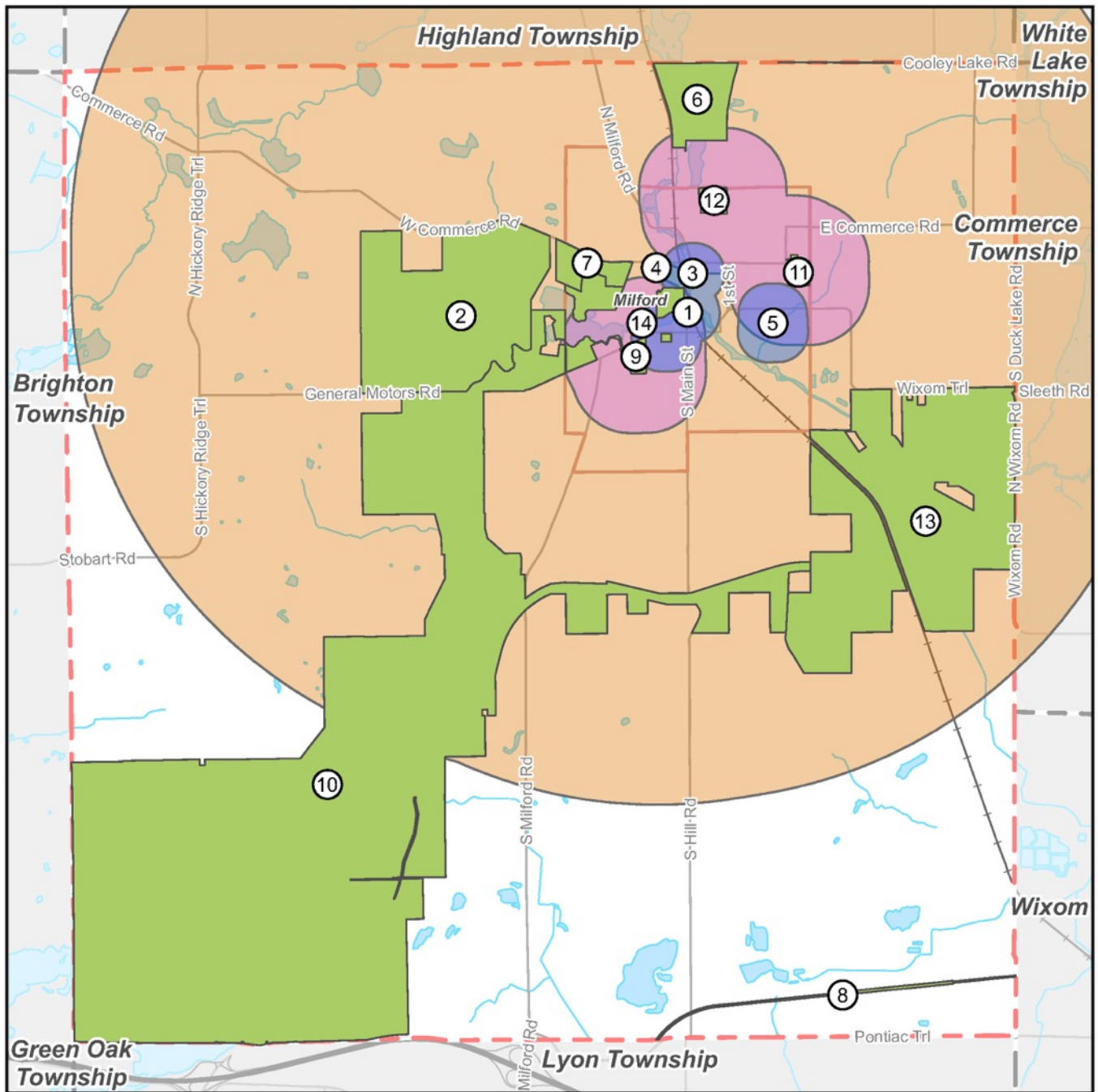
NRPA Guideline Acres/1,000 Residents ¹	Milford Recommended Acreage ²	Milford Park Land	Surplus (Deficiency) ³
13.0	221.1	272.4	51.3

¹ Source: Based on the 2023 NRPA Agency Performance Review for Jurisdictions less than 20,000 people.

² Based on the 2021 ACS combined population between Village and Township of 17,009.

³ Based on the NRPA guidelines.





Service Areas Map

Milford Township, MI

August 17, 2023



Basemap Source: Michigan Center for Geographic Information, v. 17a.
Data Source: Oakland County, McKenna 2023.

- Community Park 3 Mile Service Radius
 - 4 Central Park
 - 7 Hubbell Pond Park
- Neighborhood Park 1/2 Mile Service Radius
 - 9 Johnson Elementary School
 - 11 Kurtz Elementary School
 - 12 Muir Middle School
- Mini Park 1/4 Mile Service Radius
 - 1 Arthur's Park
 - 3 Center Street Park
 - 5 Fairgrounds Park
 - 14 Southside Park

LEGEND

- Township Boundary
- Village Boundary
- Recreation Facilities
- Major Streets
- Railroads
- Water Features
- Water Bodies

0 1,500 3,000
Feet



Park Service Areas

Each type of recreation facility (community, neighborhood, and mini) has varying service areas due to their size and amenities offered. According to the NRPA, community parks serve an area within a 1/2 to three mile radius, neighborhood parks serve an area between 1/4 mile to 1/2 mile radius and mini parks serve a population within 1/4 mile. To illustrate the proximity of recreation areas to residents, a service area map has been created on the previous page, Map 3. If considering Hubbell Pond Park, Central Park and Milford High School as “community parks”, nearly every resident of the Township is within 3 miles from one of these facilities, with the exception of those in the southern portion of the Township.

Those facilities considered “neighborhood”, or “mini parks” are all located within the Village boundaries. As the map illustrates, very few Township residents have one of these facilities within a 1/2-mile or 1/4-mile of their home. For Large Urban Parks, Regional/Metropolitan Parks/Natural Resource Areas they either server the entire community (Large Urban Parks) or service beyond the municipality’s boundaries.

Through evaluating the results of classifying Milford Recreational Facilities by park type, it is shown that Milford Township has sufficient park land of the various types of parks to meet the standards for number of parks by acreage; however, the Milford Township Service Area Map, illustrates that significant portions of the Township are not served by Mini-Parks or Neighborhood Parks. To address this issue, Milford Township should consider identifying prospective park land in the northwestern quadrant of the Township for Neighborhood or Community Parks that would address this deficiency. It’s acknowledged the southeastern quadrant is also deficient but due to the southeast quadrants industrial nature, it may not be a realistic location for a park.

Another service map area is provided for on the following page that illustrates the driving radius from the parks to address the autocentric nature of Milford Township. For this map, a 5 mile buffer was applied to all of the Parks which represents an approximately 5 minute drive.

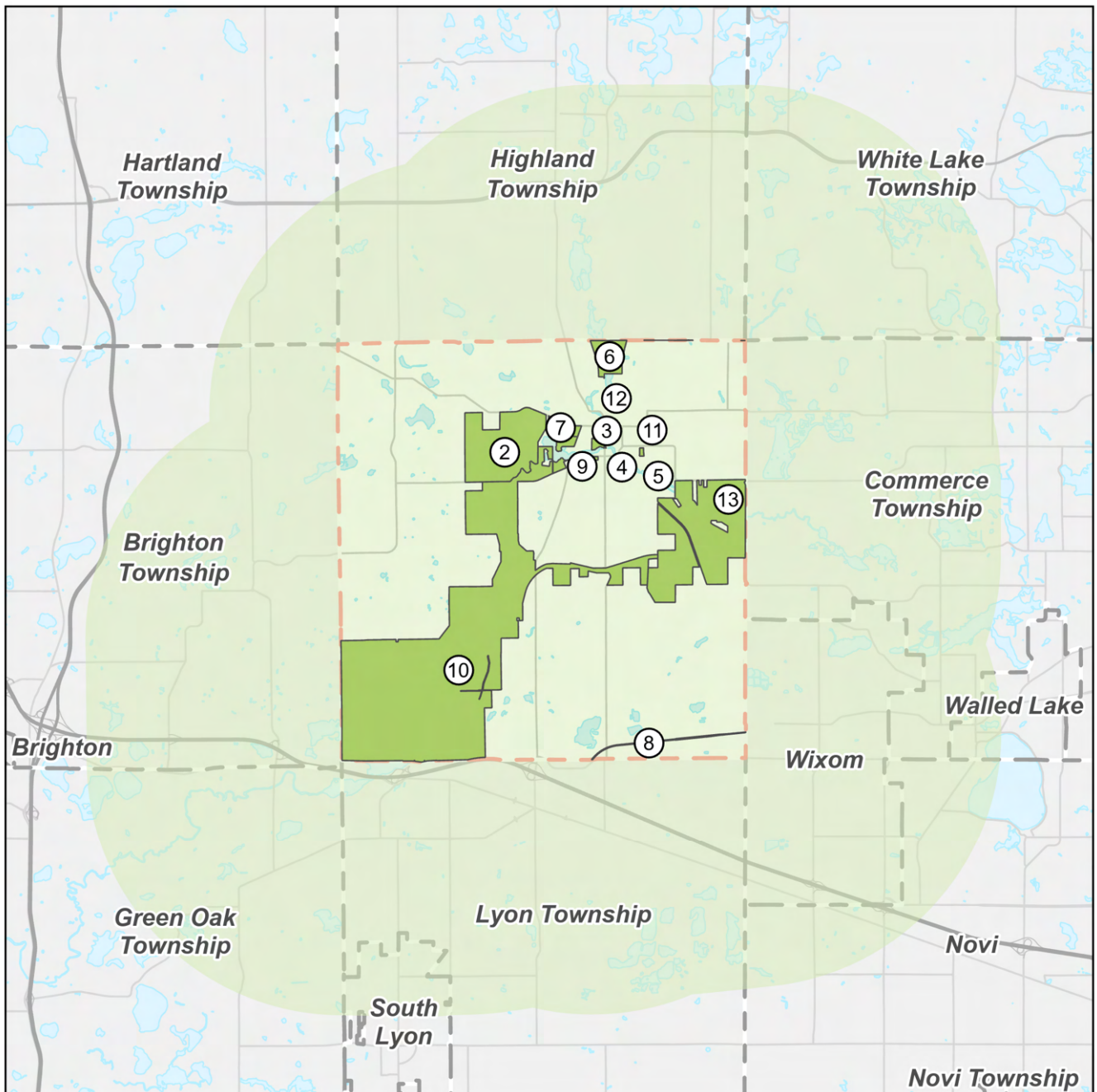
Facility Analysis

The NRPA also publishes typical recreation facility standards that specify service area, the number of facilities needed to service the population, and the land area needed for such facilities. Standards for facilities typically located within neighborhood and community parks are provided in the table below. These standards, used in conjunction with the needed acreage, facilitate further understanding of Milford Township’s recreation needs. Data in the facility deficiencies table compares the existing community recreation facilities within Milford, to the NRPA published standards.

When compared to the published standards, Milford Township is deficient in the provision of a lighted ballfield. Again, as the Township currently only owns two trails, the facilities provided by the Village, local schools, Oakland County, HCMA and the State of Michigan help to offset some of the facility deficiencies. It should be noted, however, that the Township does not have direct control over operation, maintenance, availability, etc. of any of these facilities. For example, while the standards indicate that the community is not short in soccer fields, all soccer fields are located on school or HCMA properties.

The facility standards should also be considered in light of the national recreation activity trends previously noted as well as the input received from staff, the Commission and from the public forum. Of the facilities listed in the standards, national participation over the past 10 years has only increased in ice hockey, football and soccer.





Driving Service Areas Map

Milford Township, MI

September 19, 2024

LEGEND

- Recreation Facilities
- 5-Mile Driving Service Radius
- Township Boundary

0 5,000 10,000
Feet



Basemap Source: Michigan Center for Geographic Information, v. 17a.
Data Source: Oakland County. McKenna 2023.



Table 7: Recreation Facility Evaluation

	Type of Facility	Percent of Agencies that Provide that Facility ¹	Presence of Facility in Milford	Median Number of Residents / Facility ¹	Number of Facilities Recommended ²	Number of Facilities in Milford/ Schools/ or HCMA Property	Surplus / Deficiency
Outdoor Facilities	Playgrounds	95	Yes	2,014	8	6	-2
	Basketball Courts	86	Yes	3,729	5	6	1
	Tennis Courts	76	Yes	2,805	6	9	3
	Pickleball Courts	31	No	3,252	5	0	-5
	Volleyball Courts	49	Yes	5,093	3	5	2
	Softball/ Baseball	62	Yes	5,079	3	21	18
	Soccer	51	Yes	3,600	5	7	2
	Football	35	Yes	8,637	2	1	-1
	Dog Parks	68	Yes	11,100	2	1	-1
	Swimming Pool	51	Yes	9,745	2	2	Standard Met
	Community Gardens	52	No	8,178	2	1	-1
	Skate Parks	41	Yes	10,726	2	1	-1
	Ice Rinks (outdoors)	18	No	8,045	2	0	-2
	Golf Course (18-hole)	29	Yes	9,587	2	2	Standard Met
Indoor Facilities	Recreation centers (including gyms)	63	Yes	9,745	2	5	3
	Community centers	59	No	8,829	2	0	-2
	Senior centers	41	Yes	14,000	1	1	Standard Met
	Performance amphitheaters	37	No	11,100	2	1	-1
	Nature centers	33	Yes	10,633	2	1	-1
	Aquatic centers	28	No	11,650	1	0	-1
	Stadiums	20	No	9,250	2	0	-2
	Teen centers	13	No	14,593	1	0	-1
	Indoor ice rinks	12	No	8,000	2	0	-2
	Arenas	8	No	5,531	3	0	-3

¹ Based on the 2023 NRPA Agency Performance Review for Jurisdictions less than 20,000 people.

² Based on the 2021 ACS combined population between Village and Township of 17,009.



Related Planning Efforts

Understanding planning efforts that have occurred or are occurring in the area is essential when planning for recreation improvements within the Township. This is especially true in Milford where multiple entities are in control of recreation land and facilities. A brief description of these efforts, studies, and plans is provided.

Michigan Department of Natural Resources

Currently, there are significant budget constraints within the State Park systems that have had considerable impacts upon the State's capital improvements within its State Park system. The MDNR has been able to add restroom facilities to Proud Lake State Recreation Area. No significant improvements are planned for the Highland State Recreation Area.

Camp Dearborn

Camp Dearborn is a family-orientated recreational facility, owned and operated by the City of Dearborn Recreation & Parks Department. The Camp is located in picturesque Milford, approximately 35 miles northwest of Dearborn City Hall and conveniently located near many of southeastern Michigan's main attractions. New resort cabins featuring complete bathrooms and kitchenettes with garbage disposals have been added to facility. These cabins overlook Paddleboat Lake. A zip line has also been added as a possible activity for visitors.

Village of Milford

The current Recreation Master Plan for the Village of Milford includes a description of several desired improvements to the Village park properties. For Central Park a plan was prepared in November 2015 and adopted, with a new restroom structure built. The plan included a proposed connection at Liberty Street under the existing railroad bridge to form a non-motorized, continuous path from Downtown Milford to Central Park which has been constructed. A canoe launch and landing have also been added. In general, the plan also calls for improved drainage, landscaping, boardwalk along the river, pavilion, improved parking, bandshell, and picnic areas.

At Hubbell Pond Park, the Village has completed a non-motorized trail from the Milford Dam, north to Commerce Road. The Village has long-term plans to continue the trail system throughout the Village to forge a continuous path into the downtown and into Milford Township to the north and south. Ultimately, the path would connect north into Highland Township. Additionally, an access road and handicap parking at the picnic area, scenic overlook, restored beach, fishing pier, and canoe launch.

At the smaller Village park properties, improvements include landscaping, signage, historic renovations, and improved picnic areas.

Shiawassee and Huron Headwaters Resource Preservation Project

Spearheaded by Oakland County, the S&H Project involved six communities and approximately 180 square miles: Highland, Milford, Rose, Springfield, White Lake and the Village of Milford. The project provides a model that communities can use in order to balance development with resource preservation. The plan serves as a guide for communities, property owners, developers and conservancies on how to cooperatively work together in order to identify, rank, and preserve natural resources.

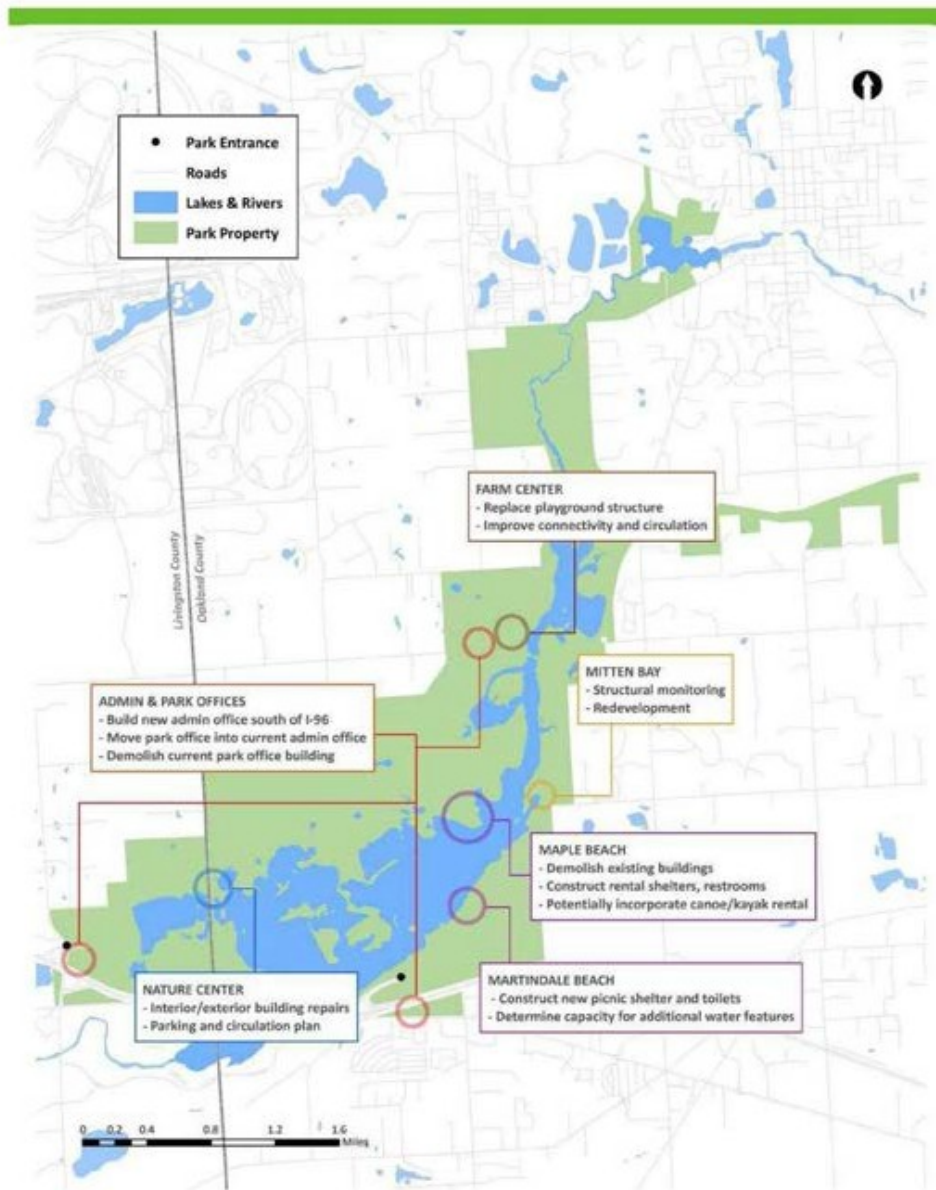


Huron Clinton Metropolitan Authority

The Huron Clinton Metroparks staff a team of planning professionals that facilitate public input, data collection and analysis, and park master planning. The Kensington Metropark Master Plan was completed in February 2017 and outlines a short-term action plan for 2017-2021 and a long-term action plan for 2022-2026.

Key projects include updates to Maple Beach, the Farm Center, the Nature Center, Martindale Beach, the Park Office & HCMA Administrative Office, and the Mitten Bay boat docking facility.

Overall, the Master Plan focuses on addressing aging infrastructure and outdated signage; drawing visitors to the park and better public outreach; and diversifying revenue sources for sustainability. Many of the master plan initiatives focus on maintaining and improving existing infrastructure over developing new facilities or trails.



Huron Clinton Metropolitan Authority Kensington Park Master Plan



Milford Open Space Team

Milford is recognized for its beautiful parks, wetlands, wildlife, and a multitude of recreational activities. In continuance of Milford's natural legacy, the Milford Open Space Team (MOST) was created to help preserve Milford's rural charm and country-like atmosphere. The team's primary purpose was to establish guidelines for the identification, location, and acquisition of unique pieces of property that will help Milford maintain its community character.

The Milford Open Space Team (MOST) was formed to explore the viability of a program to acquire and preserve open space within the Milford community boundaries. The MOST consisted of 7 residents that met on a monthly basis for nearly two years (December 2004 – November 2006) to develop a report and recommendations.

The MOST recommended that property acquisitions should be predominantly open lands and in an undeveloped condition that is suitable for or as any of the following:

- » natural areas;
- » wildlife and native plant habitat;
- » important wetlands or watershed lands;
- » stream, creek and river corridors;
- » passive, low-impact activities;
- » little or no land disturbance; and/or
- » trails for non-motorized activities.

The MOST outlined a recommended process and procedures to evaluate potential properties for purchase and preservation. A point system was developed to establish an objective way to identify the best projects for acquisition/protection and to gain the greatest benefit with Township funds. Criteria include:

- » Parcel Size
- » Proximity to Other Protected Land or Surface Water Bodies
- » Scenic Quality
- » Ecosystem Value
- » Public Access
- » Heritage/Cultural Value
- » Strategic Purchases Consistent with Objectives of Master Plan

The MOST group is no longer active, but its goals to preserve open space remain. The current Milford Township Future Land Use Map illustrates a Conservation Overlay district that was selected based upon the existing interconnected green infrastructure system. The overlay district utilizes design controls to limit the negative impacts upon valuable natural assets.



Milford Community Joint Master Plan

The Village of Milford and Charter Township of Milford are unique yet interdependent and, over the years, have developed a strong and mutually beneficial relationship. In many respects, particularly in the provision of public services and facilities, each community relies on the other for mutual assistance and support. It is through this cooperation and collaboration that the citizens of the community as a whole are able to experience a higher quality of life that could not be achieved by the efforts of either of the communities alone. In much the same manner, the Village and Township have begun working on a cooperative master planning process that will result in a more relevant and efficient Master Plan document that maximizes the benefits to each community.

Originally adopted in 2009, an addendum to the plan was adopted by the Milford Township Planning Commission in 2017 to address changes pertinent to land use planning policies within Milford Township. The addendum embraced smart growth planning principles, which includes working towards walkable communities and preserving open space and natural areas.

The addendum introduced a new future land use map for the Township, and the map included three distinct recreation land use categories: Recreation/Conservation, Regional Recreational, and Specialized Recreational.

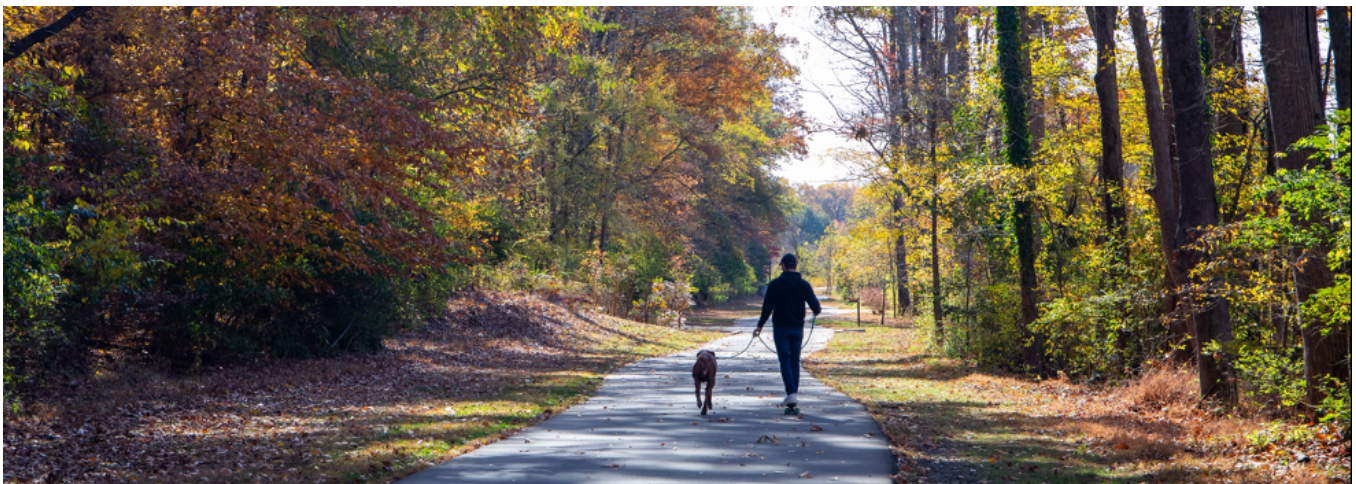
Complete Streets Policy

Non-Motorized transportation is a key component of a community's recreational infrastructure. A robust non-motorized network allows for easy use of walking, biking and other non-motorized transportation, improves non-motorized transit safety, encourages more non-motorized trips, and enables residents to connect with each other along these routes. The recognized role that a non-motorized transportation network can play in supporting recreational activities in a community is increasing, and non-motorized transportation goals should be included in today's recreation plans.

A major component of non-motorized plan is ensuring that all streets within a community are "complete" whereby they are safe, accessible, and convenient for all users (pedestrians, bicyclists, drivers, truckers, and public transportation riders) regardless of their age or physical ability.

In 2010, the State of Michigan became the 14th state to adopt Complete Streets legislation by amending PA 51 of 1951 (the State law that governs the distribution money to local jurisdictions within Michigan). The Milford Township Board of Trustees followed up this action in July 2013 when it adopted a Complete Streets resolution, which requires the Oakland County Road Commission to consult with the Township whenever it is making changes to the road network within Milford Township.

Completing a non-motorized network can take up to twenty years. This time period is based upon how often a road is significantly repaired or rebuilt and how much effort is made to implement the plan. Limited community effort may extend this period even longer, but it is important to develop the policy plan so that it may be implemented when opportunities become available. We recommend that an in-depth analysis of the Complete Streets policy is conducted as part of the master plan process.



Oakland County Natural Areas Program

In 1988, Oakland County had a Natural Features Inventory conducted for the entire county. These results have served as the basis for natural areas planning within the county. This effort was advanced in 2002 when the Oakland County Potential Conservation/Natural Areas Report was completed. This report has been updated several times including 2004 and 2017.

The report breaks down the county into areas for possible conservation and then ranks them by level of importance. The report states the following:

“Potential Conservation Areas are defined as places on the land- scape dominated by native vegetation that have various levels of potential for harboring high quality natural areas and unique natural features. In addition, these areas may provide critical ecological services such as maintaining water quality and quantity, soil development and stabilization, pollination of cropland, wildlife travel corridors, stopover sites for migratory birds, sources of genetic diversity, and floodwater retention.”

The County utilized GIS to develop a map illustrating potential conservation sites. Emphasis was specifically places on the intactness of the potential conservation area, wetlands and wetlands complexes, riparian corridors, and forested tracts. Sites under 20 acres are excluded. Potential areas were then classified as Priority One, Two, or Three.

In 2012, the Oakland Trails Advisory Council and the Natural Area Advisory Group were merged into the Oakland County Trail, Water, and Land Alliance group with responsibility to implement non-motorized trails, blueways, and land and water conservation efforts within the County.

2009, a Green Infrastructure Vision was developed for Oakland County to identify areas in the landscape that need local protection and to link the remaining valuable ecological lands.

These lands include large natural areas, important wildlife habitats, wetlands, riparian corridors, and areas that reflect key elements of Oakland County’s biological diversity. Green infrastructure is interconnected network of open spaces, natural areas, and water- ways. This network supports native species, maintains natural eco- logical processes, sustains air and water resources and contributes to health and quality of life. It also focuses on conservation values and the services provided by natural systems in concert with, instead of in opposition to, land development.

- » Green infrastructure provides a mechanism to identify and blend environmental and economic factors creating a multitude of social, economic, cultural and environmental benefits.
- » Provides a sense of place and a unique identity
- » Decreases cost of public infrastructure (i.e. stormwater management & water treatment systems)
- » Increases both active and passive recreational opportunities
- » Increases property values
- » Helps preserve the unique quality of life
- » Maintains the naturally functioning ecosystems
- » Helps to attract new businesses and well qualified workers

Parks and Recreation Commission

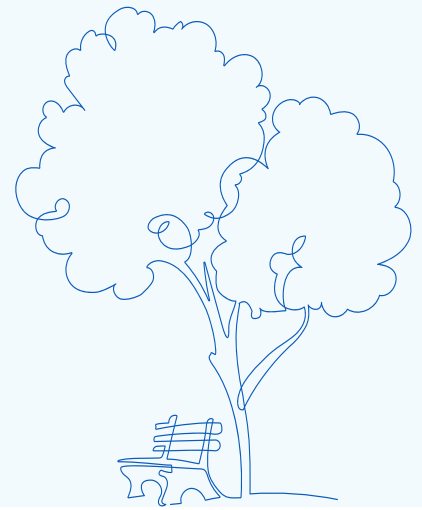
The Parks and Recreation Commission met several times during the planning process. These meetings not only included review of draft materials and information but, more importantly included discussions and brainstorming sessions that ultimately led to the development of the goals, objectives, and capital improvements schedule. The majority of discussions focused on a few primary topics including:

- » Public Engagement strategies
- » Desire to be an equestrian- and bicycle-friendly community
- » Acquisition of property for active recreation purposes
- » Establishment of a Youth Center.



Chapter 5.

Public Input Process



The Parks and Recreation Commission prepared the 2024-2028 Charter Township of Milford Recreation Master Plan to serve as a guide and decision-making document for future recreation facilities and programs. The Plan presents an inventory of existing facilities and programs within the Township and an evaluation of opportunities and needs. This portion of the document analyzes factors inside and outside of the Township that may have an effect on the direction of recreation over the next five years. This portion of the plan provides the rationale for the goals, objectives, and recommended capital improvements. The Plan considers the existing facilities in and around the Township, the anticipated demand for additional or improved facilities and the means for providing those facilities over the upcoming five-year period.

Milford Township adopted their first Recreation Master Plan in 2002. Since the adoption of the plan, there have been several accomplishments in relation to parks and recreation including:

- » Development and adoption of Parks and Recreation By-Laws
- » Passed millage for construction of Milford to Kensington Trail
- » Completed funding and planning for the Milford to Kensington Trail
- » Started and organized bi-annual community picnics
- » Provided initial and ongoing support for the development of the Milford skate park
- » Created Parks and Recreation web page on Township website
- » Created contact list of related organizations
- » Participation in support of other entities/activities such as 30K Race and Village Trail project
- » Adopted the 2008-2012 Recreation Master Plan
- » Completion and oversight of Milford to Kensington Trail
- » Purchased an outdoor movie screen with 5 other communities
- » Established the “Movies in the Park” series and Drive-in
- » Adopted and hosted the Summer Concert Series in Central Park
- » Established and organized the annual “Winterfest”, formerly known as “Milford Snow Days”
- » Continued organization of the bi-annual Community Picnics
- » Continue annual Adopt-A-Road cleanups
- » Maintained Parks & Recreation webpage on Milford Township website
- » Promoted and supported recreation opportunities with other community entities
- » Adopted the 2013-2017 addendum to the 2008-2012 Recreation Master Plan
- » Adopted the 2019-2023 addendum to the 2013-2017 Recreation Master Plan



Plan Development Process

The Parks and Recreation Commission reviewed the previous Recreation Master Plan and Addendum during a series of Commission meetings in 2022 discussing updates and noting desired modifications. A consulting firm was hired in the Summer of 2023 to assist Milford Township and the Commission in updating and developing the 5-year plan for 2024-2028.

Background Studies

The necessary data to begin the formulation of the background studies for the plan was collected from various sources including Milford Township, Oakland County, SEMCOG, US Census Bureau, American Community Survey 5-year estimates, the Huron Valley School District, Huron-Clinton Metropolitan Authority, Department of Natural Resources, YMCA, Dearborn, Trailway Management Council, field observations and various other sources.

Regional trailway planning began in earnest in Southeastern Michigan in the late 1990s. Oakland County adopted its Oakland County Trails Master Plan in 2008 which developed out of regional efforts in the early 2000s including the Southeast Michigan Green-ways Vision (2006). In 2012, the Oakland County trails and natural areas preservation efforts were joined together. The Oakland Trails Advisory Council and Natural Area Advisory Group merged into the Oakland County Trail, Water, and Land Alliance group. A Plan for SEMCOG and MDOTs Southeast Michigan Regions was produced in October 2014. These plans illustrate a proposed regional trail network that connects communities and major regional destinations together. These regional efforts do not include local connections that are needed between trip generators like schools, shopping districts, parks, and other local destinations within the individual communities.

Public Input

Public input into the development of a Parks and Recreation Plan is an important component of the recreation planning process, and the Michigan Department of Natural Resources (MDNR) recreation plan approval process mandates a minimum amount of public input. Public input guides the development of the goals and objectives that the community desires for itself, and this input assists the Parks and Recreation Commission and the Board of Trustees in developing the implementation portion. The input ensures that the plan is reflective of the interests of the community.

Working together with the Township Parks and Recreation Commission, McKenna coordinated and conducted a robust survey. Survey responses were collected over a month. The survey was designed to take less than 10 minutes for respondents to complete. At the end of the survey period, the Township received 82 responses, detailed in Appendix A. The bullet points below highlight the main takeaways from the survey responses:

- » The most common recreation and leisure activities that respondents participate in are walking, hiking, and jogging; exercise, fitness, casual sports; and community events.
- » The lowest-rated aspect of Milford Township parks and recreation was the overall indoor facilities.
- » The highest-rated aspect of Milford Township parks and recreation was the availability of walking paths, including sidewalks.
- » The most desired programs / amenities include restrooms, summer concerts, canoe / kayak launches, and hiking and walking trails.
- » Some respondents indicated that they were happy with the condition of Milford Township's parks and recreation and would not like to see any changes due to potential tax increases.

In addition to the survey, the Township also conducted an open house workshop. The results of the open house are located within Appendix A. Overall, the sentiments shared at the Open House were reflective of those noted in the survey responses.



30-Day Public Review Period

When this plan's first draft was completed, a 30-day public review period was initiated between December 12th, 2024, and January 12th, 2025. Notification of the 30-Day public review period was made available with a Public Hearing Notice, which can be viewed in Appendix C. A copy of the draft plan was left at Township Hall as well as on the Township website for residents to provide feedback in their preferred manner. Comments received during the 30-day review period were minor and led to edits that increased visibility of the appendix as well as correcting the legend of the Milford Trail Map.

Public Hearing and Resolution of Adoption

The final draft plan with the requested amendments from the Parks and Recreation Commission was presented to the Milford Charter Township Board of Trustees for consideration at its Wednesday, February 19th, 2025, meeting. After discussion and a public hearing, the Charter Township Board of Trustees adopted the Charter Township of Milford Recreation Master Plan 2024-2028 by resolution. A copy of this final plan was submitted to the Michigan Department of Natural Resources prior to the deadline of February 1, 2026.

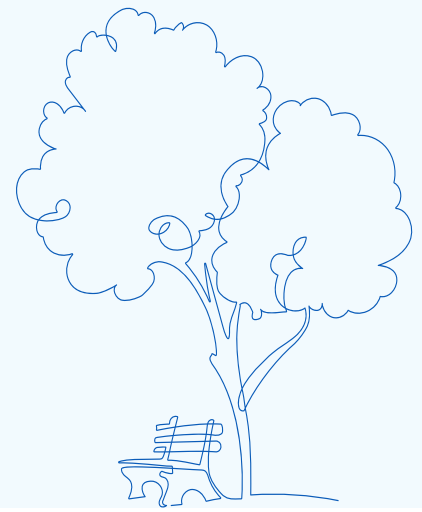


intentionally left blank



Chapter 6.

Goals and Objectives



Goals are statements that describe how the Township views its own future. They are the long-term ideal or end product that is desired. Goals should meet the following guidelines:

- » Provide guidance, but not be too detailed;
- » Be realistic and achievable; and,
- » Inspire people to action.

Statements of specific goals and more detailed objectives are intended to guide the formulation and implementation of the Parks and Recreation Master Plan and are based off the results of the public engagement process. The following goals and objectives have been established to assist in implementing the Master Plan. The goals and objectives serve to provide guidance and direction to the Township over the next five years. It is envisioned that these objectives will be reviewed on a regular basis and be utilized during the regular decision-making process. The objectives have been placed into one of seven categories relating to communication and awareness, land acquisition, habitat protection, partnerships, connectivity, facility development and operations, and programming.

Communication and Awareness

Goal: Continue to raise the level of awareness of the availability, importance, and benefits of parks and recreation within the community

Objectives:

- » Incorporate recreation goals, objectives, plans, maps, etc. onto the Township website.
- » Prepare informational brochures, flyers, announcements, social media messaging, etc. regarding existing and proposed recreation opportunities for distribution to the general public.
- » Actively seek public input on proposed projects and project details.
- » Maintain a high level of communication and awareness with Village and Township staff, boards and commissions.
- » Continue to build electronic distribution list of parks and recreation stakeholders and utilize to increase communication, awareness, and participation.



Habitat Protection and Restoration

Goal: Seek to preserve and protect natural resources, environmentally sensitive lands, and wildlife corridors.

Objectives:

- » Work closely with the Planning Commission in the implementation of the Township Zoning Ordinance regarding the preservation of environmental quality and open space preservation.
- » Assist in and encourage the maintenance of habitat along stream corridors.
- » Support and —when possible—design, fund and implement streambank restoration and erosion control measures utilizing soft shoreline techniques.
- » Coordinate with Planning Commission to protect Natural Beauty Roads and Scenic Vistas as identified in the Milford Community Master Plan.
- » Assist the Planning Commission in protecting Quality Natural Areas and habitat linkages as identified in the Milford Community Master Plan.

Land Acquisition

Goal: Pursue the acquisition of property(ies) that will provide for active recreation opportunities and/or the preservation of open space in the community.

Detailed in the previous sections of this plan, the Township has an abundance of recreation lands within its boundaries. However, only the bike path is under the direct control of the Township in terms of ownership, operation, maintenance and scheduling. In addition, the vast majority of recreation acreage within the Township boundaries is large-scale, regional facilities with a generally passive, resource-based nature. While resource-based, passive areas are outstanding facilities located in close proximity to Township residents, the Township is severely deficient in accessible, active recreation opportunities.

Objectives:

- » Explore opportunities for land acquisition. These will be assessed on parcel location and the development potential and/or natural resource protection
- » Acquire property that will assist in providing connections between existing and planned recreation areas.
- » Acquire property(ies) that may become available from other recreation providers within the community.



Partnerships

Goal: Coordinate and communicate with other agencies and entities in order to provide comprehensive, high-quality parks and recreation opportunities for the Milford community.

Objectives:

- » Continue to work closely with various public and private entities to ensure effective, efficient and diverse recreation opportunities are available in the Milford area. These include, but are not limited to:
 - Village of Milford and DDA
 - Oakland County
 - School Districts
 - Huron Valley Community Coalition
 - HCMA
 - MDNR
 - City of Dearborn
 - Neighboring communities
 - Road Commission for Oakland County
 - YMCA
 - Milford Library
 - General Motors
 - Athletic Organizations/Associations
 - Huron Valley Lacrosse
 - Huron Valley Soccer Club
 - Milford Youth Baseball Association
 - Police Athletic League (PAL)
 - Huron Valley Running & Athletic Club
 - Kensington Trail Riders Association
 - Proud Lake Trail Riders Association
 - Highland Trail Riders Association Highland Equestrian Conservancy
 - Oakland Equestrian Coalition
 - The Equestrian Land Conservation Coalition
 - Rose Center Trail Riders Association
 - Pontiac Lake Trail Riders Association
 - Mayberry Trail Riders Association
 - Walled Lake Equestrian Teams
 - Milford-Highland 4H Trailblazers
 - Huron Valley Equestrian Teams (Highland, Milford & Juniors)
 - Michigan Mountain Bike Association
 - Milford Historic Society
 - Michigan Trails and Greenways Alliance
 - League of Michigan Bicyclists
 - Hiking Michigan
 - Little League Baseball and Little League Football
 - Other groups/organizations
 - Engage the youth of the community in the development of recreation facilities and programs.
- » Collaborate and coordinate efforts with the various departments, staff, boards and commissions within the Township to ensure awareness of recreation issues and effective and efficient solutions to Township needs.
- » Encourage the involvement of private agencies and corporations in the provision of recreation within the community.
- » Host joint meeting with Planning Commission.



Connectivity

Goal: Continue to support and encourage the development and maintenance of the local and regional non-motorized systems.

Objectives:

- » Continue to focus on the implementation and maintenance of non-motorized trail systems that will contribute to the developing Oakland County regional and local trail system (hike, bike, equestrian, pedestrian).
- » Work with Huron Clinton Metropolitan Authority (HCMA) and the MDNR and support the development of multi-use hike, bike, pedestrian, and equestrian trails between Kensington Metropark and Proud Lake and Highland State Recreation Areas.
- » Encourage the school district to begin “Safe Routes to Schools” programs in order to ensure the ability to safely walk, ride, or skateboard to school.
- » Support community efforts to establish Milford as an equestrian-friendly and bicycle-friendly community.
- » Continue to encourage the Road Commission, Huron Clinton Metropolitan Authority, and the Village of Milford to provide safe crossings that are pedestrian-, bicycle-, and equestrian-friendly where trails intersect roads within the community.
- » Where possible, and to ensure safety, provide separate trails for equestrians, mountain bikes, and pedestrians and include signage that raises awareness of different trail user’s needs.
- » Advocate with Oakland County Roads Commission to implement the Township’s Complete Streets Policy Plan and compliance with the Township’s Complete Streets resolution.

Facility Development and Operations

Goal: Provide the community with high quality, diverse recreation opportunities by expanding parks and recreation offerings.

Objectives:

- » Provide or create amenities that fulfill the gaps identified in Table 7, the Recreation Facility Evaluation, where feasible.
- » Create opportunities for trail and river access when opportunities arise.
- » Identify and implement barrier-free and ADA-compliant improvements to facilities in order to improve access for all.
- » When the Township is able to acquire property and/or easements for the development of recreation facilities they will be:
 - well-designed and of a high quality
 - designed with maintenance costs at the forefront
 - built to comply with existing barrier-free standards (minimum)
 - built to be universally accessible
- » Seek opportunities to construct multi-use fields (i.e. soccer and baseball).
- » Aggressively seek and pursue alternative funding opportunities to assist in the implementation of the Recreation Master Plan.
- » Evaluate the need to increase Township staffing for maintenance, operations, etc.
- » Continue to seek inter-agency opportunities to share financial, personnel, and equipment needs with various public and private entities.
- » Continue the planning process through periodic review of the Recreation Master Plan and necessary updates.
- » Engage various community groups such as garden clubs, scouts, etc. to assist in maintenance and beautification projects.
- » Evaluate the establishment of a youth and/or community center.



Programming

Goal: In conjunction with other parks and recreation providers, make available high quality, comprehensive, and diverse recreation programs that meet the needs of the community.

Objectives:

- » Expand community events hosted and coordinated by the Parks and Recreation Committee, including Movie Nights, Drive-In Movies, winter events, community picnics, and concerts-in-the-park.
- » Work closely with other providers (see Partnerships) to offer a variety of recreation programs.
- » Continue to offer, sponsor, support, and/or coordinate community events.
- » Seek opportunities and gauge interest in additional events/activities such as charity bike rides, runs, pool party, equestrian days, adventure races, etc.

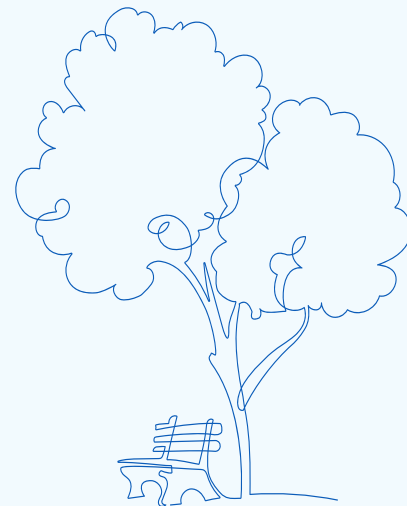


intentionally left blank



Chapter 7.

Action Program



The Action Program is intended to detail the direction that the Township wishes to take over the next five years in order to improve recreation opportunities within the community. This includes the establishment guidelines to direct recreation operation and policies as well as capital improvements to implement the Master Plan. As is detailed in the Basis for Action section, Milford is basing recreation improvement and service decisions on recreational trends, national standards, existing facilities, community opinion, needs identified and observed by staff, the Commission, and Board, as well as demographic trends, the capability of the land and its surroundings, and funding sources and availability.

As was previously noted, the Parks and Recreation Commission adopted a Mission Statement to guide their overall progress and direction as follows:

The mission of the Milford Township Parks and Recreation Commission is to work with public and private partners to provide recreational facilities and activities to its residents and visitors.

Capital Improvement/ Action Program Priorities

Just as essential as the goals and objectives are to the development of parks and recreation opportunities within the Township, so is the establishment of capital improvement priorities for the next five years. The programming of capital improvements for this Recreation Plan have been established to:

- » provide a framework for decision makers during the annual budgeting process.
- » serve as a guide for the Parks and Recreation Commission
- » enable the Township to apply for grant funding for proposed projects.

The capital improvement schedule is not a fixed element and is neither all-inclusive nor exclusive. The schedule merely reflects the results of the Parks and Recreation Commission's research, brainstorming and data gathering in conjunction with input from staff and the general public. While priorities have been identified, it's likely that over the next five years, priorities may shift due to unanticipated circumstances such as private donations, changing recreation trends, community opinion and/or available funding. The Parks and Recreation Commission anticipates reviewing the plan on an annual basis to ensure its appropriateness and relevancy to the current Township views, finances, strategies, etc. As much as is possible, it is the Township's intent to develop and implement the guidelines and capital improvements identified in this plan with existing Township funds and grant resources.



Action Program

The action program contains specific projects that the Township aims to accomplish that work toward fulfilling the listed goals and objectives of the Parks and Recreation Plan, along with their potential funding sources and timelines. These projects are organized from highest priority to lowest priority.

Action Program Key

Priority	Timeframe	Responsibility
A Most Important	Within One Year	Project Lead
B Very important	1-3 Years	Key Participant
C Important	3+ Years	Contributor
	As available	
	Ongoing	

Responsibility (Abbreviations)		
PC	Planning Commission	https://www.michigan.gov/mdot/programs/grant-programs
TB	Township Board	https://www.milfordtwpmi.gov/departments/charter_township_of_milford_-_township_hall/index.php
PR	Parks & Recreation Commission	https://www.milfordtwpmi.gov/activities/test/index.php
TS	Township Staff	https://www.milfordtwpmi.gov/
MNRTF	Michigan Natural Resources Trust Fund	https://www.michigan.gov/dnr/buy-and-apply/grants/rec/mnrftf
LWCF	Land and Water Conservation Fund	https://lwcfcollaboration.org/
MDOT TE	Department of Transportation Enhancement Fund	https://www.michigan.gov/mdot/programs/grant-programs
V	Volunteers	
MK	McKenna	www.mckenna.com

Funding	
PUBLIC	Includes public funds from the Township operating budget, County, and State funding. May also include local government bonds.
PRIVATE	Includes funds from private sources.



Project	Priority	Recommended Timeframe	Partnerships with PR			Funding	
			Township	Other Govt	Private	Public	Private
COMMUNICATION AND AWARENESS							
Continue to raise the level of awareness of the availability, importance, and benefits of parks and recreation within the community.							
Incorporate recreation goals, objectives, plans, maps, etc. onto the Township website.	A	Within One Year	TS			•	
Prepare informational brochures, flyers, announcements, social media messaging, etc. regarding existing and proposed recreation opportunities for distribution to the general public.	A	Ongoing	TS			•	
Actively seek public input on proposed projects and project details.	B	Ongoing	TB PC	TS		•	
Maintain a high level of communication and awareness with Village and Township staff, boards and commissions.	B	Ongoing	TB PC	TS		•	
Continue to build electronic distribution list of parks and recreation stakeholders and utilize to increase communication, awareness, and participation.	C	Ongoing	TS			•	
LAND ACQUISITION							
Pursue the acquisition of property(ies) that will provide for active recreation opportunities and/or the preservation of open space in the community.							
Explore opportunities for land acquisition. These will be assessed on parcel location and the development potential and/or natural resource protection.	A	1-3 Years	TB	MNRTF LWCF		•	
Acquire property that will assist in providing connections between existing and planned recreation areas.	A	3+ Years	TB	MNRTF LWCF		•	
Acquire property(ies) that may become available from other recreation providers within the community.	A	As Available	TB	MNRTF LWCF		•	
HABITAT PROTECTION AND RESTORATION							
Seek to preserve and protect natural resources, environmentally sensitive lands, and wildlife corridors.							
Work closely with the Planning Commission in the implementation of the Township Zoning Ordinance regarding the preservation of environmental quality and open space preservation.	A	Ongoing	TB PC	MNRTF LWCF		•	
Assist in and encourage the maintenance of habitat along stream corridors.	B	As Available	TB PC	MNRTF LWCF		•	
Support and when possible, design, fund and implement streambank restoration and erosion control measures utilizing soft shoreline techniques.	B	As Available	TB PC	MNRTF LWCF		•	
Coordinate with Planning Commission to protect Natural Beauty Roads and Scenic Vistas as identified in the Milford Community Master Plan.	C	As Available	TB PC	MDOT TE		•	
Assist the Planning Commission in protecting Quality Natural Areas and habitat linkages as identified in the Milford Community Master Plan.	C	As Available	TB PC	MNRTF LWCF		•	



Project	Priority	Recommended Timeframe	Partnerships with PR			Funding	
			Township	Other Govt	Private	Public	Private
PARTNERSHIPS Coordinate and communicate with other agencies and entities in order to provide comprehensive, high-quality parks and recreation opportunities for the Milford community.							
Continue to work closely with various public and private entities to ensure effective, efficient and diverse recreation opportunities are available in the Milford area.	A	Ongoing	TB	MNRTF LWCF	V	•	•
Engage the youth of the community in the development of recreation facilities and programs.	B	Ongoing	TB	TS	V	•	
Collaborate and coordinate efforts with the various departments, staff, boards and commissions within the Township to ensure awareness of recreation issues and effective and efficient solutions to Township needs.	B	Ongoing	TB	PC TS		•	
Encourage the involvement of private agencies and corporations in the provision of recreation within the Community.	C	Ongoing	TB	TS	V		•
CONNECTIVITY Continue to support and encourage the development and maintenance of the local and regional non-motorized systems.							
Continue to focus on the implementation and maintenance of non-motorized trail systems, including water systems, that will contribute to the developing Oakland County regional and local trail system (hike, bike, equestrian, pedestrian, kayak/waterways).	A	As Available	TB	MDOT TE MNRTF		•	
Work with Huron Clinton Metropolitan Authority (HCMA), the MDNR, Oakland County, and other applicable partners to support the development of multi-use hike, bike, pedestrian, and equestrian trails between Kensington Metropark and Proud Lake and Highland State Recreation Areas.	A	Ongoing	TB TS	MDOT TE MNRTF		•	
Support community efforts to establish Milford as an equestrian-friendly and bicycle-friendly community, as well as a place to enjoy passive water recreation and waterways.	B	Ongoing	TB TS	MDOT TE MNRTF	V	•	
Continue to encourage the Road Commission for Oakland County (RCOC), HCMA, and the Village of Milford to provide safe crossings that are pedestrian-, bicycle-, and equestrian-friendly where trails cross roads within the community	B	As Available	TB	MDOT TE		•	
Where possible, and to ensure safety, provide separate trails for equestrians, mountain bikes, and pedestrians and include signage that raises awareness of different trail user’s needs.	C	Ongoing	TB			•	
Support the RCOC to implement the Township’s Complete Streets Policy Plan and compliance with the Township’s Complete Streets resolution.	C	Ongoing	TB	MDOT TE		•	



Project	Priority	Recommended Timeframe	Partnerships with PR			Funding	
			Township	Other Govt	Private	Public	Private
FACILITY DEVELOPMENT AND OPERATIONS							
Provide the community with high quality, diverse recreation opportunities by expanding parks and recreation offerings.							
Provide or create amenities that fulfill the gaps identified in Table 7, the Recreation Facility Evaluation, where feasible.	A	Ongoing	TB			•	
When the Township is able to acquire property and/or easements for the development of recreation facilities, the Township will strive towards the property being: » Well-designed and of a high quality » Designed with maintenance costs at the forefront » Built to comply with existing barrier-free standards (minimum) » Built to be universally accessible	A	As Available	TB PC	MNRTF LWCF	MK	•	
Identify and implement barrier-free and ADA-compliant improvements to facilities in order to improve access for all.	A	Ongoing	TB			•	
Create opportunities for trail and river access when opportunities arise.	B	Ongoing	TB			•	
Seek opportunities to construct multi-use fields (i.e. soccer and baseball), picnic pavilion(s), and courts (i.e. volleyball and basketball).	B	Ongoing	TB	PC		•	
Review and Revise Parks and Recreation Plan as necessary.	B	Ongoing	TB	PC	MK	•	
Aggressively seek and pursue alternative funding opportunities to assist in the implementation of the Recreation Master Plan.	B	Within One Year	TB	TS		•	
Evaluate the need to increase Township staffing for maintenance, operations, etc.	C	Ongoing	TB	TS		•	
Continue to seek inter-agency opportunities to share financial, personnel, and equipment needs with various public and private entities.	C	Ongoing	TB			•	
Engage various community groups such as garden clubs, scouts, etc. to assist in maintenance and beautification projects.	C	Ongoing	TB	TS	V	•	
Evaluate the establishment of a youth and/or community center.	C	As Available	TB			•	
Develop and maintain a volunteer training and recruitment program for volunteers.	C	As Available	TB TS	PC	V		•



Project	Priority	Recommended Timeframe	Partnerships with PR			Funding	
			Township	Other Govt	Private	Public	Private
PROGRAMMING							
In conjunction with other parks and recreation providers, make available high quality, comprehensive, and diverse recreation programs that meet the needs of the community.							
Expand community events hosted and coordinated by the Parks and Recreation Committee, including Movie Nights, Drive-In Movies, winter events, community picnics, and concerts-in-the-park.	A	Ongoing	TB	TS	V		
Work closely with other providers (see Partnerships) to offer a variety of recreation programs.	A	Ongoing	TB	TS	V		•
Continue to offer, sponsor, support, and/or coordinate community events.	B	Ongoing	TB	TS	V	•	
Seek opportunities and gauge interest in additional events/activities such as charity bike rides, runs, equestrian days, adventure races, etc.	C	As Available	TB		V	•	
PARK FACILITIES IMPROVEMENTS							
Trailhead amenities such as restrooms, paved parking areas, and bike repair kiosks. Adding these to Kensington Milford Trailhead is a particularly high priority.	A	Within One Year	TB			•	
Trail equipment, for all ages.	B	Ongoing	TB	MNRTF		•	
Art along trails.	C	As Available	TB		V		•

Synopsis

The main objective of the Milford Township Parks and Recreation Master Plan is to acquire property for a park that includes a restroom, paved parking areas, picnic tables, playground equipment, and ADA accessible amenities. The Parks and Recreation Commission also shared their desires to upgrade trailheads to emphasize connectivity to trails. This will require collaboration with partners to provide the community with high quality, diverse recreation opportunities by expanding parks and recreation offerings. With the objectives discussed in this synopsis, the Parks and Recreation Commission will address the following categories from the Action Program table above:

- Land Acquisition
- Partnerships
- Connectivity
- Facility Development and Operations
- Park Facilities Improvements



Possible Funding Sources

The following pages describe possible funding sources that may be available for various recreation-related projects. Funding sources change on a continual basis and therefore consistent time and resources are necessary to ensure complete awareness of opportunities.

Transportation Alternatives Program (MDOT)

Transportation Enhancements (TE) activities are federally funded, community-based projects that expand the intermodal transportation system and enhance the transportation experience by improving the cultural, historic, aesthetic and environmental aspects of the transportation infrastructure. To be eligible, a project must fall into one of the 12 TE activities and relate to surface transportation. Activities that relate to the implementation of this Master Plan include:

- » **Facilities for pedestrians and bicycles.** Includes new or reconstructed sidewalks, walkways, curb ramps, bike lane striping, wide paved shoulders, bike parking, bus racks, off-road trails, bike and pedestrian bridges and underpasses.
 - Paved shoulders four or more feet wide
 - Curb lane width greater than 12 feet
 - Bike lanes
 - Pedestrian crosswalks, sidewalks
 - Shared use paths 10 feet wide or greater
 - Path/trail user amenities
 - Grade separations
 - Bicycle parking facilities
 - Bicycle accommodations on public transportation
 - Streetscape improvements
- » **Turnouts, Overlooks, and Viewing Areas.** Projects that provide views of the Great Lakes or highly unique scenic and scenic areas
- » **Historic Preservation and Repair of Transportation Facilities.** Projects that enhance National Register listed historic districts, locally designated districts, or National Heritage Areas. Preservation of original properties and promotion of cultural tourism.
- » **Environmental Mitigation Activities.** Water quality projects that have positive effects on watersheds and water bodies and drafting of watershed management plans.

A minimum 20% local match is required for proposed projects and applications are accepted on an on-going basis.

Michigan Natural Resources Trust Fund

The MNRTF provides funding for both the purchase of land (or interests in land) for recreation or protection of land because of its environmental importance or scenic beauty and the appropriate development of land for public outdoor recreation use. Goals of the program are to: 1) protect Michigan's natural resources and provide for their access, public use and enjoyment; 2) provide public access to Michigan's water bodies, particularly the Great Lakes, and facilitate their recreation use; 3) meet regional, county and community needs for outdoor recreation opportunities; 4) improve the opportunities for outdoor recreation in Michigan's urban areas; and, 5) stimulate Michigan's economy through recreation-related tourism and community revitalization.

Any individual, group, organization, or unit of government may submit a land acquisition proposal. However, only state and local units of government can submit development proposals. All proposals for grants must include a local match of at least 25% of the total project cost. There is no minimum or maximum for acquisition projects. For development projects, the minimum funding request is \$15,000 and the maximum is \$500,000. Applications are due in April and August for acquisition projects and April (only) for development projects.



Land and Water Conservation Fund

The Land and Water Conservation Fund (LWCF) is a federal appropriation to the National Park Service who distributes funds to the Michigan Department of Natural Resources for development of outdoor recreation facilities. Minimum grant requests were \$30,000 and maximum grant requests were \$300,000. The match percentage must be 50% of the total project cost. Applications are due April 1st.

Recreation Passport Grants

The Recreation Passport program is to provide funding to local units of government for the development of public recreation facilities. These funds may be for new facilities or rehabilitation of older facilities. A 25 percent local match is required, and grants range from \$7,500 to \$150,000. Applications are due April 1st.

People for Bikes

The Bikes Belong Coalition is sponsored by members of the American Bicycle Industry. Their mission is to put more people on bikes more often. The program funds projects in three categories:

- » Facility
- » Education
- » Capacity Building

Requests for funding can be up to \$10,000 for projects such as bike paths, trails, lanes, parking and transit, and safe routes to school. Applications are reviewed on a quarterly basis. More information can be found at <https://peopleforbikes.org>.

Safe Routes to School Program

The Safe Routes to School Program is a national movement to make it safe, convenient and fun for children to bicycle and walk to school. When routes are safe, walking or biking to and from school is an easy way to get the regular physical activity children need to succeed. In Michigan, the program is sponsored by the Michigan Governor's Council on Physical Fitness and has gained momentum over the past few years. The purpose of the program as defined in the federal legislation is:

1. to enable and encourage children, including those with disabilities, to walk and bicycle to school;
2. to make bicycling and walking to school a safer and more appealing transportation alternative, thereby encouraging a healthy and active lifestyle from an early age; and
3. to facilitate the planning, development, and implementation of projects and activities that will improve safety and reduce traffic, fuel consumption, and air pollution in the vicinity of schools.

Applications for the Safe Routes to School Program major grant program are quarterly and \$200,000 is available per school in infrastructure funds while \$8,000 is available per school in programming funds. To be eligible to apply, you must complete a pre-application process.

Mini grants have \$5,000 available per school with a max of \$25,000 per district. Mini grants have some criteria as non-infrastructure projects that include a variety of educational efforts and enforcement activities.

Recreational Trails Program / Recreation Improvement Fund

The Recreational Trails Program/Recreation Improvement Fund is administered by the MDNR for trails on DNR land. The DNR division must always be the applicant but can be developed as a joint application with a local unit of government. Applications are typically due in June of each year. Additional information can be found on the MDNR-Grants website.

Ralph C. Wilson, Jr. Legacy Funds

The Ralph C. Wilson, Jr. Legacy Funds were created to provide permanent, endowed support for programs and initiatives that reflect the personal passions of Mr. Wilson. The funds provide support for projects in southeast Michigan that serve to increase the walkability and bikeability of local communities and/or increasing outdoor recreational activities within the region. The funds also support projects in southeast Michigan that bring high-quality sports programs to youth.



Chapter 8.

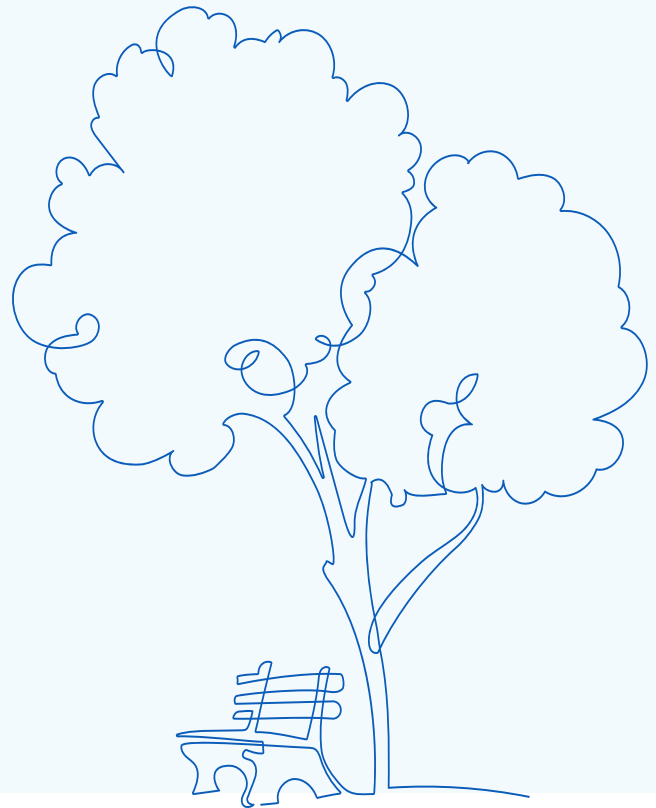
Appendices

Appendix A: Public Input

Appendix B: Post-Completion Self-Certification Report

Appendix C: Published Hearing Notice and Meeting Minutes from Hearing and Resolution of Adoption

Appendix D: Transmittals



Appendix A: Public Input

Parks and Recreation Workshop



We want to hear from you!

Milford Township is in the process of updating its Parks and Recreation Plan. A Parks and Recreation Plan helps guide parks and recreation prioritization and spans a five year period – 2024 to 2028. The Parks and Recreation Plan is used as a basis for applying to obtain grants and other funding for parks and recreation projects. The plan will be rooted in the desires and visions of residents. This is why we need you to share your opinions and great ideas for the future of Milford Township. Please come join the workshop and share your thoughts on Parks and Recreation in Milford Township.

**Wednesday, May 22, 2024
6:00 – 8:00 PM**

Baker's of Milford – 2025 S Milford Rd

Scan here to take the survey!
surveymonkey.com/r/MilfordTownshipParks



intentionally left blank





Charter Township of *Milford* Michigan

Milford Township Parks & Recreation Survey

Welcome to the Milford Township Survey!

Milford Township is in the process of updating its Parks & Recreation Plan. A Parks & Recreation Plan helps guide parks and recreation prioritization and spans a five year period – 2024 to 2028. The Parks & Recreation Plan is used as a basis for applying to obtain grants and other funding for parks and recreation projects.

The plan will be rooted in the desires and visions of residents. This is why we need you to share your opinions and great ideas for the future of Milford Township. If filling out a paper copy survey, please return to Township Hall by May 31st.

Thank you!

1. What best describes your residential status?

- ☐ I am a full-time resident of Milford Township
- ☐ I am a full-time resident in the Village of Milford
- ☐ I own property in Milford Township, but do not reside in Milford Township
- ☐ I work in Milford Township
- ☐ I live outside of Milford Township (please specify)

2. How long have you lived in Milford Township?

- ☐ Less than five years
- ☐ 5 - 10 years
- ☐ 11 - 15 years
- ☐ 15 - 20 years
- ☐ More than 20 years
- ☐ Not applicable



3. Which parks and recreation facilities located in or near Milford Township are you familiar with or have visited in the past?

- ☐ Arthur's Park
- ☐ Camp Dearborn
- ☐ Center Street Park
- ☐ Central Park
- ☐ Fairgrounds Park
- ☐ Highland State Recreation Area
- ☐ Hubbell Pond Park
- ☐ Huron Valley Trail
- ☐ Island Lake Recreation Area
- ☐ Janowski Park
- ☐ Kensington Metropark
- ☐ Lyon Oaks County Park
- ☐ Milford High School Pools & Facility
- ☐ Milford Skatepark
- ☐ Proud Lake State Recreation Area
- ☐ Southside Park
- ☐ Other (please specify)



4. Rank these parks and recreation facilities on a scale of 1 to 5 of importance

	Not at all important	Not very important	Neither Important or unimportant	Important	Very Important	Not familiar with facility
Arthur's Park	<input type="radio"/>	<input type="radio"/>	<input type="radio"/>	<input type="radio"/>	<input type="radio"/>	<input type="radio"/>
Camp Dearborn	<input type="radio"/>	<input type="radio"/>	<input type="radio"/>	<input type="radio"/>	<input type="radio"/>	<input type="radio"/>
Center Street Park	<input type="radio"/>	<input type="radio"/>	<input type="radio"/>	<input type="radio"/>	<input type="radio"/>	<input type="radio"/>
Central Park	<input type="radio"/>	<input type="radio"/>	<input type="radio"/>	<input type="radio"/>	<input type="radio"/>	<input type="radio"/>
Fairgrounds Park	<input type="radio"/>	<input type="radio"/>	<input type="radio"/>	<input type="radio"/>	<input type="radio"/>	<input type="radio"/>
Highland State Recreation Area	<input type="radio"/>	<input type="radio"/>	<input type="radio"/>	<input type="radio"/>	<input type="radio"/>	<input type="radio"/>
Hubbell Pond Park	<input type="radio"/>	<input type="radio"/>	<input type="radio"/>	<input type="radio"/>	<input type="radio"/>	<input type="radio"/>
Huron Valley Trail	<input type="radio"/>	<input type="radio"/>	<input type="radio"/>	<input type="radio"/>	<input type="radio"/>	<input type="radio"/>
Island Lake Recreation Area	<input type="radio"/>	<input type="radio"/>	<input type="radio"/>	<input type="radio"/>	<input type="radio"/>	<input type="radio"/>
Janowski Park	<input type="radio"/>	<input type="radio"/>	<input type="radio"/>	<input type="radio"/>	<input type="radio"/>	<input type="radio"/>
Kensington Metropark	<input type="radio"/>	<input type="radio"/>	<input type="radio"/>	<input type="radio"/>	<input type="radio"/>	<input type="radio"/>
Lyon Oaks County Park	<input type="radio"/>	<input type="radio"/>	<input type="radio"/>	<input type="radio"/>	<input type="radio"/>	<input type="radio"/>
Milford High School Pools and Facility	<input type="radio"/>	<input type="radio"/>	<input type="radio"/>	<input type="radio"/>	<input type="radio"/>	<input type="radio"/>
Milford Skatepark	<input type="radio"/>	<input type="radio"/>	<input type="radio"/>	<input type="radio"/>	<input type="radio"/>	<input type="radio"/>
Proud Lake State Recreation Area	<input type="radio"/>	<input type="radio"/>	<input type="radio"/>	<input type="radio"/>	<input type="radio"/>	<input type="radio"/>
Southside Park	<input type="radio"/>	<input type="radio"/>	<input type="radio"/>	<input type="radio"/>	<input type="radio"/>	<input type="radio"/>



5. What kinds of recreation/leisure activities do you and your family members participate in (please select all that apply)?

- ☐ Exercise/Fitness/Casual Sports
- ☐ Group Exercise/Lessons, e.g. Yoga, aerobics
- ☐ Indoor Fitness (e.g. personal workouts)
- ☐ Cultural Events
- ☐ Community Events (e.g. outdoor movies, picnics, and outdoor concerts)
- ☐ Children's Play
- ☐ Organized Team Sports
- ☐ Nature Study/Gardening
- ☐ Biking
- ☐ Walking/ Hiking/ Jogging
- ☐ Running Races of varying length (1 Mile, 5K, 10K)
- ☐ Water sports (swimming, canoeing, kayaking, paddleboarding)
- ☐ Tennis/ Pickleball
- ☐ Fishing
- ☐ Cross Country Skiing
- ☐ Youth Groups
- ☐ Other (please specify)

6. If you do not visit local/regional parks, recreation facilities, and/or programs, why not? (select all that apply):

- ☐ Facilities are not well maintained
- ☐ Program or facility not offered
- ☐ Facilities do not have the right equipment
- ☐ Quality of programs is poor
- ☐ Too far from residence
- ☐ Participate in programs provided by other communities or organizations
- ☐ I do not know the location of parks and facilities
- ☐ Parking
- ☐ Facilities are too hard to reach, poor access
- ☐ No opinion
- ☐ Other (please specify)



7. Please rate the following aspects of public parks, recreation facilities, and spaces in Milford:

	Excellent	Good	Fair	Poor	N/A
Overall outdoor facilities	<input type="radio"/>	<input type="radio"/>	<input type="radio"/>	<input type="radio"/>	<input type="radio"/>
Overall indoor facilities	<input type="radio"/>	<input type="radio"/>	<input type="radio"/>	<input type="radio"/>	<input type="radio"/>
Variety of parks and recreation facilities	<input type="radio"/>	<input type="radio"/>	<input type="radio"/>	<input type="radio"/>	<input type="radio"/>
Maintenance of parks and recreation facilities	<input type="radio"/>	<input type="radio"/>	<input type="radio"/>	<input type="radio"/>	<input type="radio"/>
Availability of public spaces where people want to spend time and feel safe	<input type="radio"/>	<input type="radio"/>	<input type="radio"/>	<input type="radio"/>	<input type="radio"/>
Availability of walking paths (including sidewalks)	<input type="radio"/>	<input type="radio"/>	<input type="radio"/>	<input type="radio"/>	<input type="radio"/>
Availability of bike facilities and paths	<input type="radio"/>	<input type="radio"/>	<input type="radio"/>	<input type="radio"/>	<input type="radio"/>
Access to river/ water	<input type="radio"/>	<input type="radio"/>	<input type="radio"/>	<input type="radio"/>	<input type="radio"/>

8. Rank the following programs that are most desired to least desired.

	Least Desirable	Not Desirable	Desirable	Most Desirable
Adult Fitness and Wellness	<input type="radio"/>	<input type="radio"/>	<input type="radio"/>	<input type="radio"/>
Arts and Crafts	<input type="radio"/>	<input type="radio"/>	<input type="radio"/>	<input type="radio"/>
Baseball/Softball	<input type="radio"/>	<input type="radio"/>	<input type="radio"/>	<input type="radio"/>
Basketball	<input type="radio"/>	<input type="radio"/>	<input type="radio"/>	<input type="radio"/>
Bicycling	<input type="radio"/>	<input type="radio"/>	<input type="radio"/>	<input type="radio"/>
Boating	<input type="radio"/>	<input type="radio"/>	<input type="radio"/>	<input type="radio"/>
Camping	<input type="radio"/>	<input type="radio"/>	<input type="radio"/>	<input type="radio"/>
Canoe/Kayak Launches	<input type="radio"/>	<input type="radio"/>	<input type="radio"/>	<input type="radio"/>
Community Gardens	<input type="radio"/>	<input type="radio"/>	<input type="radio"/>	<input type="radio"/>
Cultural/Historical Programs	<input type="radio"/>	<input type="radio"/>	<input type="radio"/>	<input type="radio"/>
Dance	<input type="radio"/>	<input type="radio"/>	<input type="radio"/>	<input type="radio"/>
Disc Golf	<input type="radio"/>	<input type="radio"/>	<input type="radio"/>	<input type="radio"/>
Dog Park	<input type="radio"/>	<input type="radio"/>	<input type="radio"/>	<input type="radio"/>
Fishing Access	<input type="radio"/>	<input type="radio"/>	<input type="radio"/>	<input type="radio"/>
Golf Course	<input type="radio"/>	<input type="radio"/>	<input type="radio"/>	<input type="radio"/>
Hiking/Walking Trails	<input type="radio"/>	<input type="radio"/>	<input type="radio"/>	<input type="radio"/>
	<input type="radio"/>	<input type="radio"/>	<input type="radio"/>	<input type="radio"/>



Jazzercise/Zumba	<input type="radio"/>	<input type="radio"/>	<input type="radio"/>	<input type="radio"/>
Martial Arts/Self Defense	<input type="radio"/>	<input type="radio"/>	<input type="radio"/>	<input type="radio"/>
Nature Education Programs	<input type="radio"/>	<input type="radio"/>	<input type="radio"/>	<input type="radio"/>
Natural Resource Management	<input type="radio"/>	<input type="radio"/>	<input type="radio"/>	<input type="radio"/>
Pickleball	<input type="radio"/>	<input type="radio"/>	<input type="radio"/>	<input type="radio"/>
Playgrounds	<input type="radio"/>	<input type="radio"/>	<input type="radio"/>	<input type="radio"/>
Programs for People with Disabilities	<input type="radio"/>	<input type="radio"/>	<input type="radio"/>	<input type="radio"/>
Programs for At-Risk Youth	<input type="radio"/>	<input type="radio"/>	<input type="radio"/>	<input type="radio"/>
Restrooms	<input type="radio"/>	<input type="radio"/>	<input type="radio"/>	<input type="radio"/>
Skateboard/Bike Park	<input type="radio"/>	<input type="radio"/>	<input type="radio"/>	<input type="radio"/>
Sledding	<input type="radio"/>	<input type="radio"/>	<input type="radio"/>	<input type="radio"/>
Soccer	<input type="radio"/>	<input type="radio"/>	<input type="radio"/>	<input type="radio"/>
Special Events/Festivals	<input type="radio"/>	<input type="radio"/>	<input type="radio"/>	<input type="radio"/>
Swimming	<input type="radio"/>	<input type="radio"/>	<input type="radio"/>	<input type="radio"/>
Tennis	<input type="radio"/>	<input type="radio"/>	<input type="radio"/>	<input type="radio"/>
Volleyball	<input type="radio"/>	<input type="radio"/>	<input type="radio"/>	<input type="radio"/>
Youth Fitness and Wellness	<input type="radio"/>	<input type="radio"/>	<input type="radio"/>	<input type="radio"/>
Programs for seniors	<input type="radio"/>	<input type="radio"/>	<input type="radio"/>	<input type="radio"/>
Movies in the park	<input type="radio"/>	<input type="radio"/>	<input type="radio"/>	<input type="radio"/>
Community Picnics	<input type="radio"/>	<input type="radio"/>	<input type="radio"/>	<input type="radio"/>
Summer Concerts in the Park	<input type="radio"/>	<input type="radio"/>	<input type="radio"/>	<input type="radio"/>

9. If you were in charge of Milford Parks & Recreation for a day what is the first thing you would change?



10. What is the best way that Milford Township can get information out to residents?

- ☐ Township website
- ☐ Email
- ☐ Newspaper
- ☐ Facebook or other social media
- ☐ Other (please specify)

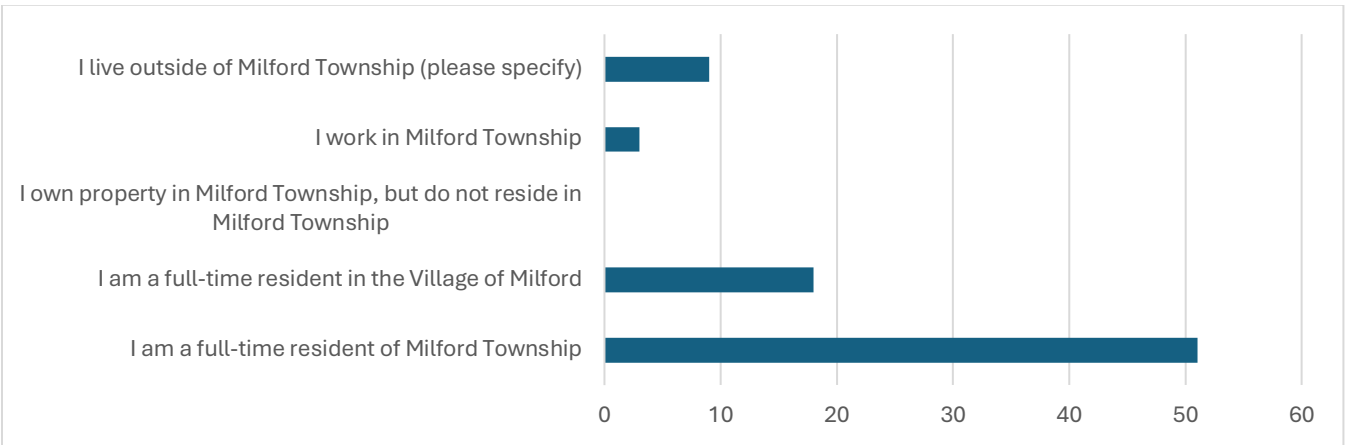
11. Please share any additional comments and thank you again for your participation!



Survey Results

Over 3 months, 82 responses to the survey were collected.

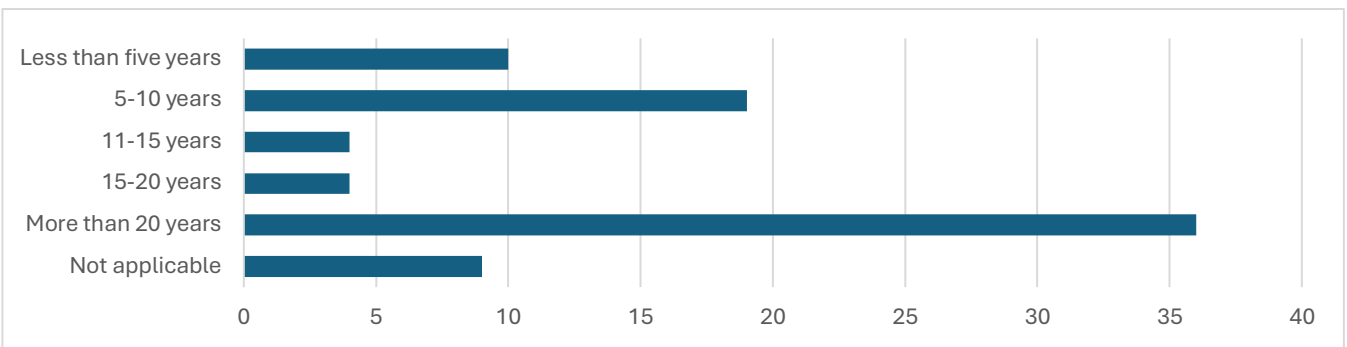
Question 1:
What best describes your residential status?



The following responses were provided by respondents who selected the “I live outside of Milford Township” option.

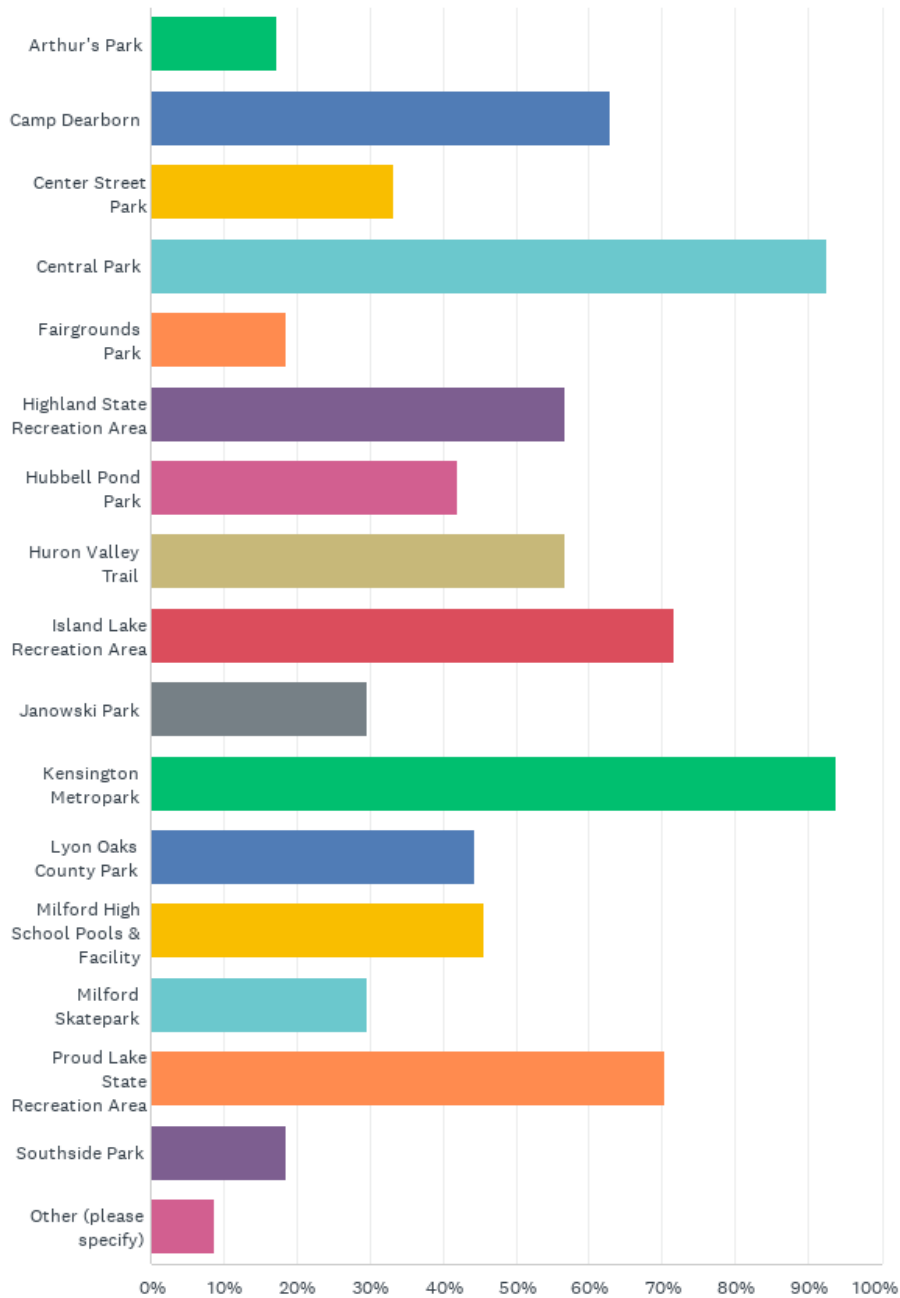
- » Brighton but I lived in Milford Twp for 10 years
- » Long time resident, but now live further southwest
- » Livonia
- » Our mailing address is Milford
- » Whitmore Lake
- » Highland
- » Howell
- » Commerce
- » Commerce resident

Question 2:
How long have you lived in Milford Township?



Question 3:

Which Parks and recreation facilities located in or near Milford Township are you familiar with or have visited in the past?



Within the “Other” option, respondents identified the following facilities.

- » Atchinson Park (New Hudson)
- » I'm familiar with all of the parks we have access to. This question does nothing to understand what is lacking or sufficient in our parks.
- » YMCA
- » Moore dam
- » Milford bike path
- » Trail that connects the YMCA to Kensington
- » YMCA

Question 4:

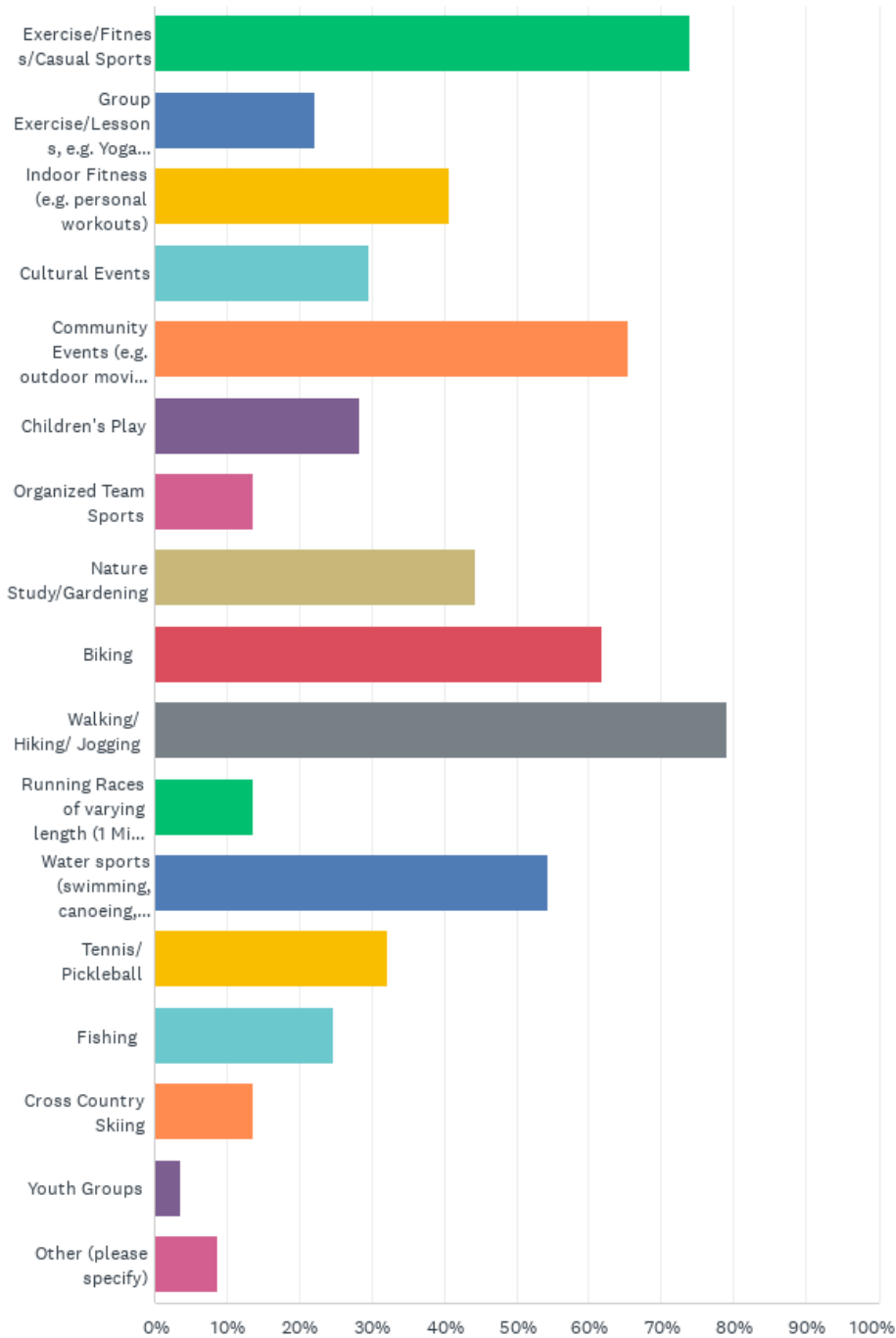
Rank these parks and recreation facilities on a scale of 1 to 5 of importance.

Park Name	Weighted Average
Arthur's Park	3.42
Camp Dearborn	3.52
Center Street Park	3.67
Central Park	4.62
Fairgrounds Park	3.06
Highland State Recreation Area	4.46
Hubbell Pond Park	3.90
Huron Valley Trail	4.41
Island Lake Recreation Area	4.40
Janowski Park	3.91
Kensington Metropark	4.77
Lyon Oaks County Park	3.98
Milford High School Pools and Facility	3.67
Milford Skatepark	3.38
Proud Lake State Recreation Area	4.48
Southside Park	3.15



Question 5:

What kinds of recreation / leisure activities do you and your family members participate in (please select all that apply)?

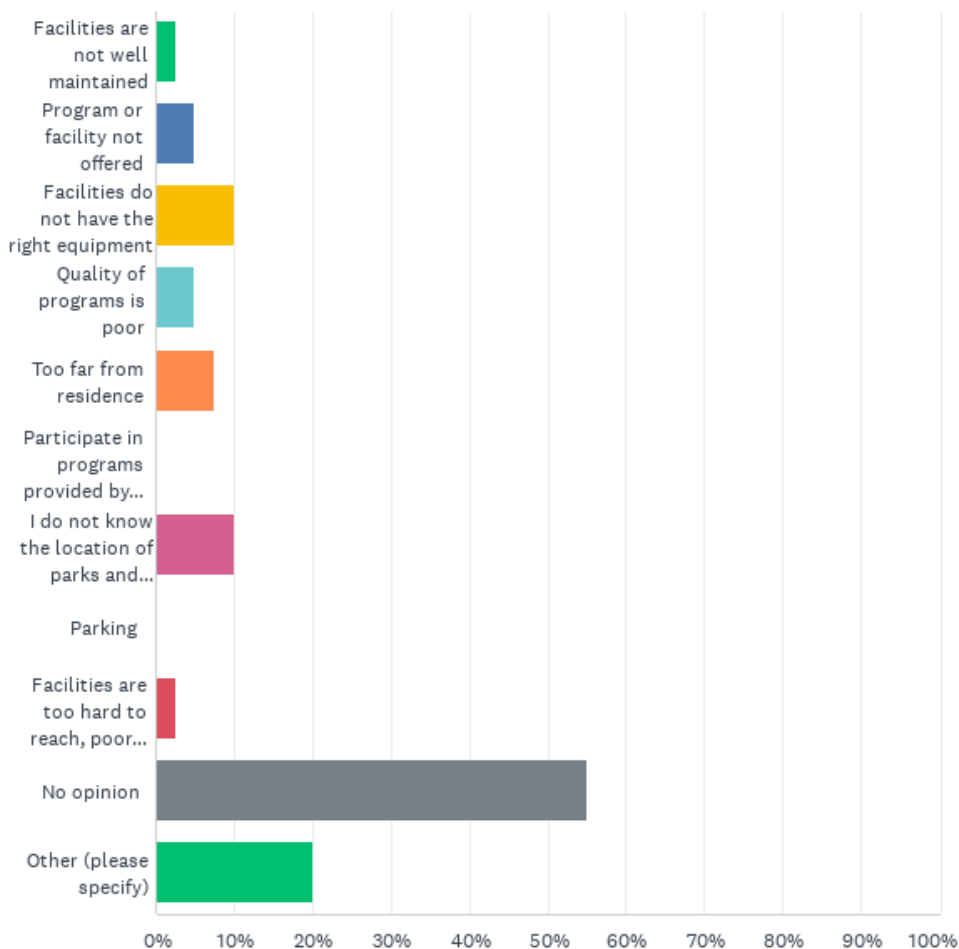


Within the “Other” option, respondents identified the following activities.

- » Horseback riding
- » Kayaking
- » I participate in a lot of activities in and around Milford township. But this question doesn't ask what is lacking or sufficient. I think our parks are great, and we don't need more facilities. We do not need to pave over everything, we do not need trails on private property or across right of ways. Keep your focus on parks, not unnecessary trails that over our two people want to connect themselves to the village.
- » Boating
- » Equestrian
- » Equestrian trails
- » Equestrian

Question 6:

If you do not visit local / regional parks, recreation facilities, and/or programs, why not? (Select all that apply):



Within the “Other” option, respondents identified the following reasons for not visiting parks and recreation facilities.

- » Lack of time
- » I do use most I have already listed above but I do not believe we need more I have never had to wait to use any or them
No waiting no need to increase
- » I visit them and satisfied
- » Too crowed and chaotic
- » I do so n/a
- » N/A
- » Parks should have pickleball courts
- » Need more pickleball in Milford!

Question 7:

Please rate the following aspects of public parks, recreation facilities, and spaces in Milford:

Aspect	Weighted Average
Overall outdoor facilities	3.20
Overall indoor facilities	2.88
Variety of parks and recreation facilities	3.08
Maintenance of parks and recreation facilities	3.12
Availability of public spaces where people want to spend time and feel safe	3.20
Availability of walking paths (including sidewalks)	3.24
Availability of bike facilities and paths	3.22
Access to river w/ water	3.06

Question 8:

Rank the following programs that are most desired to least desired.

Program	Weighted Average
Adult Fitness and Wellness	3.88
Arts and Crafts	3.09
Baseball/Softball	2.62
Basketball	2.56
Bicycling	3.84
Boating	3.31
Camping	3.18
Canoe / Kayak Launches	4.09
Community Gardens	3.45
Cultural / Historical Programs	3.20
Dance	2.31
Disc Golf	2.87
Dog Park	3.18
Fishing Access	3.00
Golf Course	2.85
Hiking / Walking Trails	4.31
Hockey	2.59
Jazzercise / Zumba	2.31
Martial Arts / Self Defense	2.48
Nature Education Programs	3.60



Natural Resource Management	3.79
Pickleball	3.42
Playgrounds	3.61
Programs for people with disabilities	3.56
Programs for at-risk youth	3.37
Restrooms	4.22
Skateboard/Bike Park	3.03
Sledding	3.35
Soccer	2.97
Special Events / Festivals	3.95
Swimming	3.30
Tennis	2.63
Volleyball	3.04
Youth Fitness and Wellness	3.46
Programs for seniors	3.68
Movies in the park	3.52
Community picnics	3.22
Summer concerts in the park	4.14



Question 9:

If you were in charge of Milford Parks & Recreation for a day what is the first thing you would change?



Common themes noted in the responses include:

- » Many respondents indicated that they are uninterested in additional improvements due to possible tax increases.
- » There was an emphasis on expanding connectivity through walking and bike paths.
- » Adding bathrooms and street furniture to existing amenities.
- » Installing pickleball courts
- » Improvements to existing facilities

The complete responses are provided below.

- » N/A
- » Milford already has great parks and opportunities for everyone, and maintaining what we have is adequate. We don't need any new parks or bike paths.
- » Add more indoor and outdoor pickleball courts with easy access and open times.
- » Bike and walking acces along busy roads to parks
- » Work on the parks you have. Make them better. Stop trying to expand.
- » Stop trying to spend money making improvements that we don't need. Milford is perfect the way it is.
- » Location of Farmers Market. I would put it in Central Park
- » I would have the parks & rec department take more ownership of areas where volunteers are expected to do the heavy lifting alone. Share the load with the volunteers.
- » Establish designated pickleball courts with plenty of parking.
- » Approve the removal of baseball fields and replace with pickleball courts at janowski park.
- » Have the township hire a full time Recreation Director and make it a real department in the township offices
- » Stop finding ways to spend tax money. We have a great town. Improving is not always improvement. It's just waste.
- » Nothing I moved into the township 30 years ago because I like the way it was and the way it is. I have reasonable access to everything around me and we really don't need anything new.
- » Things are good as is. No change or addition wanted!
- » Nothing
- » If you have bike paths ticket people that don't use them in are on the road
- » The outrageous spending habits Actually involve the ENTIRE community



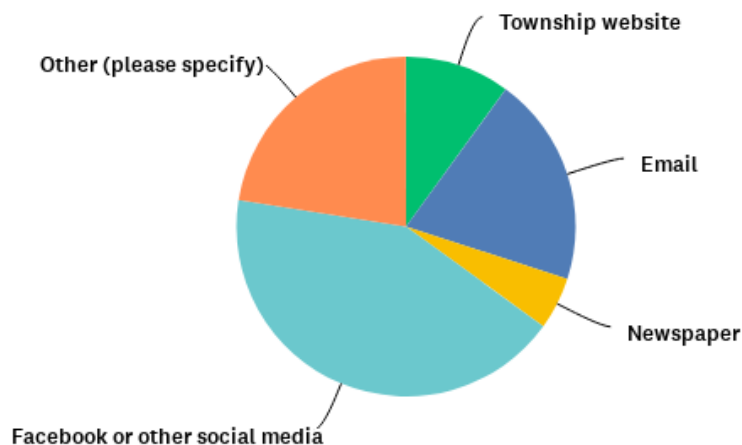
- » Nothing....no more tax increases....we are maxed out...
- » Leadership needs to change, they are pushing their own agenda that does not represent what the township residents want.
- » Have dedicated pickleball courts. There were up to 20-50 people at Central Park everyday during the summer playing pickleball.
- » Create an ice rink for winter ice skating
- » Make better use of existing facilities
- » Water bounce house at community events- kid loved it last year. You guys have been doing a great job! Keep the green space green!
- » Not familiar enough with the whole to have a biggest problem, but it would be nice to have a water pump at the Highland MTB trailhead.
- » Better connectivity to downtown and existing trails.
- » At community picnics, there should be more refreshments. Halfway thru everything is gone.
- » N/a
- » New playground at central park, more public parks, sidewalks, and bike path (especially on Commerce Road)
- » No idea.
- » Add garbage cans to encourage everyone to clean up
- » Build pickleball courts
- » Milford needs new Pickleball courts (6-8) to handle what has become a very fast growing and popular sport. I would also add an area where those waiting can socialize and sit around in comfort. This will bring many people to enjoy the parks of Milford.
- » Add more basketball, tennis and pickle ball courts.
- » More open to the public. More accepting of outsiders. Less secretive.
- » Make certain the restrooms in Central Park were open most of the time. Nothing is more annoying than finding them locked.
- » Add more connective trails!!
- » Nothing
- » Making sure all parks had a bathroom
- » Stop spending money and utilize what we have.
- » The tennis courts to make into pickleball
- » I would add about 10 pickleball courts. This will literally bring hundreds of people to the village/township every week.
- » We need a safe way to get from downtown to the highschool without using a car
- » Retain pickleball courts that were previously located in Central Park. Or a plan to have pickleball courts located within Milford.
- » More connections between walking and biking paths. Add bike / walking path to Commerce Road between Hickory Ridge and downtown Milford.
- » Na
- » Na
- » Explain to the public/taxpayers why we are spending so much money on Central Park and work on lower taxes! They are getting out of control!
- » Add pickleball courts!
- » More and better/safer walking and biking trails/sidewalks
- » Create MANY "dedicated" pickleball courts in Central Park as well as other parks.
- » Advertising to families the benefits and services all the parks have to offer.
- » Expand trails to more areas of township
- » Assign walking paths for walkers. Parents with small children on bikes are using the path and adult fast bike riders are dangerous. Although it says to enjoy trail at own risk, what penalties are for bikers going too fast? Bike paths for bikers, especially since many fly by walkers doing over 10 miles per hour! Assign paths for pet walkers because some people don't pick up their pet waste. It smells and gross to look at!



- » I would step back from confusing the desires of the densely populated areas with the desires of the rural areas of our township. The rural residents live in certain areas of Milford Township for its many desirable factors, and do not want trails and facilities brought to our private properties.
- » Mandate that all dogs must be on a leash. Particularly when they exit their cars at the dog park.
- » Create more green areas/parks to meet the growing Milford population.
- » Concerts in park
- » Add a sidewalk/bike path along wixom trail from the post office towards sleeth road for expanded community access & walkability
- » Build a community pool
- » Need pickleball courts. It's the fastest growing sport. Easy to learn and anyone can play. Great way to get exercise and meet people in our community.
- » Need more pickleball courts
- » More senior activities the senior center is just not interesting enough...always same same same as I see it

Question 10:

What is the best way that Milford Township can get information out to residents?



Within the “Other” option, respondents identified the following ways they want to receive information.

- » Occasional texts
- » Usps and social media
- » Reg mail and social media
- » Mailings
- » EVERY OUTLET POSSIBLE. Every single meeting should be recorded and live streamed. So people can always be informed of what's going on and can watch it when they are available if they cannot make it to meetings
- » All of them !
- » I don't know, but you're not doing a very good job now on getting the word out
- » Any efforts made would be much better than the lack of communication about this survey.
- » Get out in the community
- » Flyers
- » Temporary signage
- » Parks & Rec Newsletter
- » All sources
- » Focus on active rather than passive communication. Website and Facebook require the public to go hunting for info. It should be easy and quick for them. Try getting flyers posted at local businesses where the community frequents.



- » Parks & Rec has failed miserably at getting information out about past master plans and the May 22 workshop. The township has a list serve for email that has had no communication about the May 22 workshop, the website lists nothing about the workshop. Terrible.
- » Email or Facebook. Text alerts could work too.
- » Mass mailing - EVERYBODY gets the US mail!
- » through churches, schools, flyers @ stores

Question 11:

Please share any additional comments and thank you again for your participation!

The responses provided are included below.

- » Milford is a Hallmark village
- » I love Milford but most of the stores in the downtown area are struggling or already closed, and we ought to be supporting our downtown merchants rather than building new trails that will ultimately raise taxes
- » Add a bike path at the south end of the township to connect to Kensington on the east side of Milford Rd.
- » None
- » Leave Milford rural we do not want this to be the next Birmingham
- » Not in favor of building any more bike paths. We have access to many parks already that have numerous bike paths. No new bike paths, no new taxes!
- » Most of my answers were chosen to imply that there is always room to improve. Milford P&R does a great job! What about outdoor racquet ball courts, bike paths that lead to residential areas outside of the village, and connecting DNR parks (Highland Rec & Proud Lake) to downtown with multi-use paths.
- » Most people moved out to the country because they don't want sidewalks and bike paths in front of their homes. Keeping Milford rural, not overpopulated/too crowded/heavy traffic, and respecting property owners rights to do what they want with their property and not have it taken over for bike paths or any other public uses.
- » I am concerned about these bike trails that they want to build which takes peoples property away from them. If I wanted bike paths/sidewalks, I would've moved into the village. I moved into the township because it's rural and private. That is why we have a car to get to where we're going. I'm also concerned about this new push for a park. 33% of the land in Milford Township is already parks. I don't mind using somebody else's park Especially when I have the freedom of access to it
- » People in the township live in the township because we like the preservation of natural environment! Taking over private property to build bike trails is exactly what no one wants!
- » I'm not paying any more exorbitant taxes for officials to waste and squander
- » No more bike paths they don't use them anyways. They're still in the road in our way
- » Stop careless spending
- » We do not need sidewalks down our Township roads. If we wanted that we would live in the village.
- » Please, no more improvements, additions, increases in population to Milford... We are maxed out on population and maxed out on taxes... Just maintain what we have.
- » The parks and rec commission members did not advertise the open house, and they used it to push their own agenda, the results do not represent the community.
- » Thank you volunteers!!!
- » Love the mountain bike and hiking trails. Them, along with meeting friends for drinks at River's Edge or a bit at a Main Street restaurant are the only reasons I come to Milford, and half the time, it's to do both of those things. Keep up the good work!
- » A tent with table n chairs
- » Thank you for holding this event!
- » Please, help keep Milford and Highland clean.
- » I've talked to a few friends who went to the open house at Bakers. They were treated with disdain. This is unacceptable.
- » Milford is a great place for outdoor recreation and it has been a pleasure to see the improvements made over time. I enjoy the mountain bike trails and paved bike trails. The Village is very walkable and I enjoy seeing all the flowers or



just wandering Main Street. I am curious to know if anything will ever be done with the brownfield site by the plaza and upper mill pond. It seems like it would be a good space for something. Anyway, keep up the good work.

- » TRAILS!!
- » Recreation is a huge part of what makes the Milford area such a great place to live. It's time for the township officials to be proactive and create a stronger Parks and Rec department that can give the people of the township the opportunities they are looking for.
- » We are blessed with parks, no more please.
- » Please please please our community needs like 6 good pickleball courts. It's very high demand in our community!! And if some will be built can we use the existing ones u til new ones are built? Also volleyball courts would be good too to keep! Thx
- » My name is Brad O'Neill and I am a longtime resident of the village of Milford. I'm excited about the opportunity to frequently visit the newly renovated central park. It truly looks amazing and can't wait to see it finished. There is however, in my opinion something that is missing. The continuation of pickleball courts that were previously there and used frequently. Pickleball, for those not aware, is a fast growing sport that is accessible to people of all ages and skill levels, making it an ideal activity for fostering community engagement and physical well-being. First and foremost, pickleball courts in our downtown area would promote a healthier lifestyle for us Milfordians. In an era where sedentary lifestyles are increasingly prevalent, providing accessible recreational opportunities is crucial. Pickleball is a low-impact sport that offers cardiovascular exercise, improves coordination, and enhances flexibility. By keeping pickleball courts downtown, we can encourage more people to get active and prioritize their health. Furthermore, pickleball is a social sport that brings people together. Unlike some other sports that require specialized skills or extensive training, pickleball is easy to learn, making it an inclusive activity for individuals of all ages and backgrounds. By creating a space where people can come together to play and socialize, we can strengthen the bonds within our community and promote a sense of belonging. But the benefits of pickleball courts extend beyond physical health and social connection. They also have the potential to boost our local economy. As pickleball continues to rise in popularity, people will frequent downtown more often and there can be tournaments and events that attract participants from far and wide beyond just having open play for pickleball which is also heavily attended on a daily basis. By hosting such events in our downtown area, we can draw visitors, stimulate local businesses, and create a vibrant atmosphere that benefits everyone. There are plans to retain activities like volleyball, ice skating, and basketball from what I understand. If we truly want to be inclusive I would hope pickleball courts would be in the plans for central park or an alternative spot since they were once there. Having played there many times, I can say with confidence it was widely used and honestly more so than the other areas of recreation that are being retained. We need to keep the residents of Milford here to play pickleball, not going to neighboring cities/villages to play. Many surrounding communities have incorporated pickleball courts, why not Milford? In conclusion, the establishment of pickleball courts in our downtown area is not just a recreational investment; it's an investment in the health, happiness, and prosperity of our community. By providing accessible opportunities for physical activity, fostering social connections, and stimulating economic growth, pickleball courts have the potential to enrich the fabric of our downtown in countless ways. Thank you for all the work you do, as well as your time and consideration.
- » None
- » Question 10 should be multiple choice or ell of the above.
- » There is a lack of information sharing coming from Parks & Rec, does not feel like they are being transparent.
- » Everything has been impressive so far. I'd like more events downtown.
- » Adding a path from the post office, along the cemetery, and down wixom trail a bit would increase walkability and thus add more life and profits to your downtown area.
- » Milford twp/village is a beautiful community. We need to preserve open spaces and not over build.
- » Who ever made the decision to remove the pickleball courts only shows how short sided you are and how much you don't know your own community. How can you justify removing the pickleball court when so many people play there on a daily basis?
- » We are really missing an opportunity to bring in dozens of people to our businesses on a daily basis by not having pickleball courts. Take a look at what Richardson Center (Commerce) has done. I would be happy to speak to someone about this project. Samjacokes@gmail.com



- » Not sure why the plans for resurfacing the pickleball/ tennis court at Central Park were squashed. This decision has put a bad light on Milford with anyone who enjoys the sport and lives in the area...head scratcher for sure.
- » We are a young family that moved to Milford 2.5 years ago. We adore Central Park and we're so excited to be back with all of the renovations. I really just want to give my compliments, and thanks. We thank you for making this of such importance! We are grateful and my children get to grow with these parks. ????
- » Love that Central Park is being updated. Please add Pickleball to these upgrades. Otherwise the residents will be hightailing it to Commerce and Highland Twp where the courts for the community have become a priority.
- » I would really like to see a free splash pad and more free playground facilities for children. The only free playground facility is at central park and the park is currently under construction. There are no other free playground facilities within Milford. There are really no free splash pads in the area at all and would be a great addition to a park.
- » Many roads do not include safe pedestrian cycling routes. This is a problem for our community that should be addressed as roads are periodically maintained or improved and as other development takes place.
- » Looking forward to the new boardwalk too!
- » A recreation director could work in conjunction with the senior center director and get more programs all year long for everyone. Some ideas: Oktoberfest, winter carriage rides, lunch with Easter Bunny or Santa, Moonlight canoeing, all could be sponsored by township. Perhaps a millage question for some additional funding.



BIG IDEA

In general, what's your big idea for Milford Township Parks and Recreation?

Write your ideas on a sticky note and place below. If you have comments specifically related to programming please provide them on the PROGRAMS board.



Comments on this board include:

- » Expand the Huron Valley Trail
- » Marketing
- » Pickleball Courts
- » Why was this not better advertised?!?
- » You can't consider 20 people as a cross section of public opinion.
- » \$ spent on park increases prop values
- » Pickleball Courts
- » No more parks, No more trails, No more taxes
- » Utilized what we already have. No more trails, parks, taxes, grants.
- » I think we have adequate amount of parks and paths. I want less taxes.
- » Why was no one notified about this meeting.
- » Connect bike/walking paths from Milford to Huron Valley Trail
- » Traffic Calming measures in all resident areas
- » Make Milford Trail walkable in winter! (plow it)



PROGRAMS

What's your big idea for Milford Township Parks and Recreation **programming**?

Write your ideas on a sticky note and place below. If you have general comments about Parks and Recreation, please provide them on the BIG IDEA board.



For your reference, current recreational programs available to Township residents include:

- » Concerts
- » Picnics
- » Movie Nights
- » Drive In Theater
- » Winterfest
- » Glow Golf®

Comments on this board include:

- » Farmers Market
- » Health and wellness programs
- » Pickleball courts
- » Nature programs
- » A park!
- » Group yoga or tai chi at a park
- » Pickleball courts holiday caroling
- » More gardens
- » More kayak / dinner out nights
- » Partner with local recreation groups – Bike Fest, Great Lakes Open Disc Golf Tourney



AMENITIES

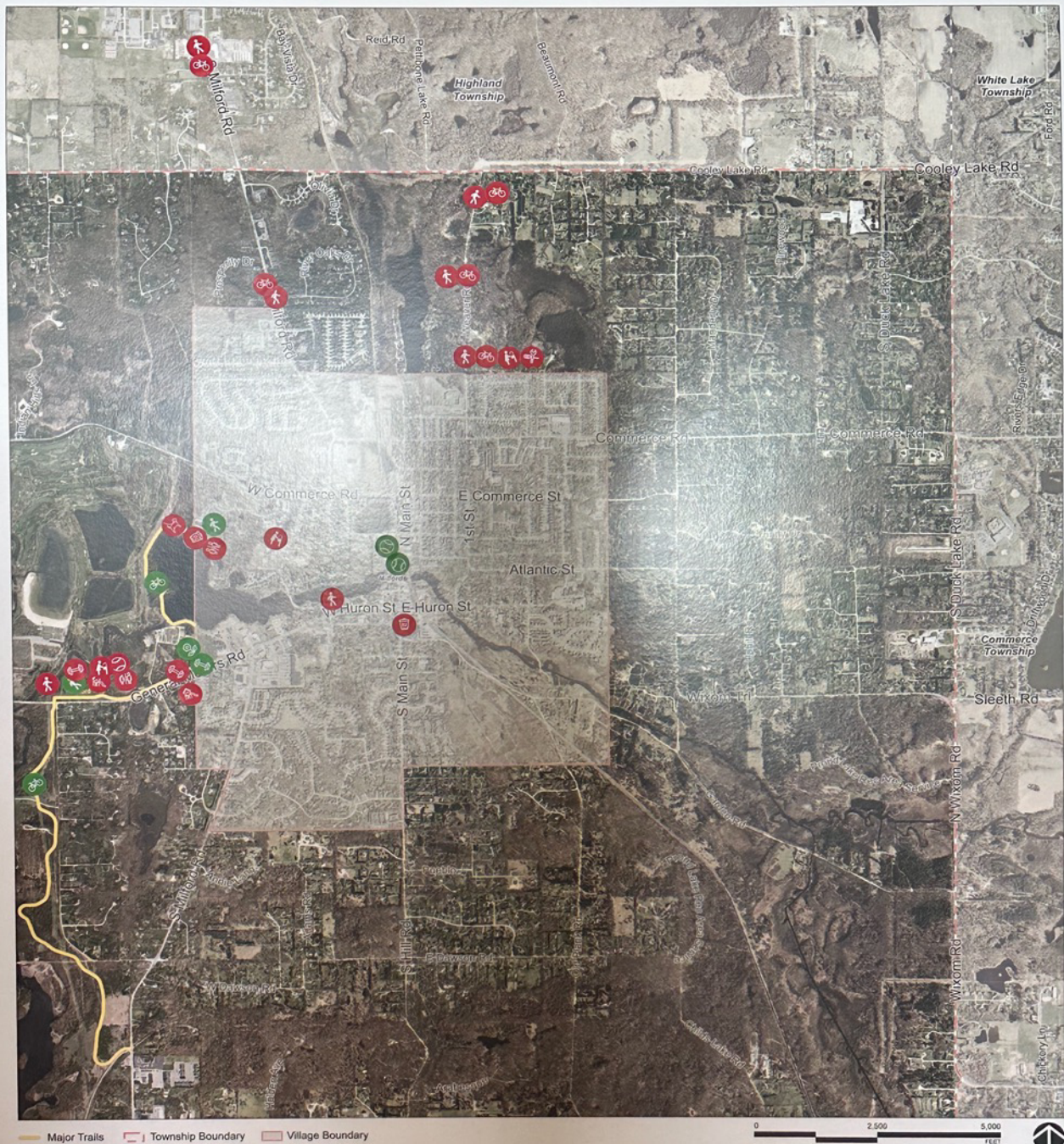
KEY

Where does Milford Township need park and recreation amenities?
What types of amenities are needed?

Place a **green sticker** of an amenity where that amenity is sufficient and there is no need for that amenity at that location. Place a **red sticker** of an amenity where that amenity is missing and there is a need for that amenity at that location.

Use as many stickers as you see fit.





NORTHEAST QUADRANT

Where does Milford Township need park and recreation amenities? What types of amenities are needed?

Place green icon stickers in the location where the amenity is sufficient. Place red icon stickers where the amenity is missing or needed.



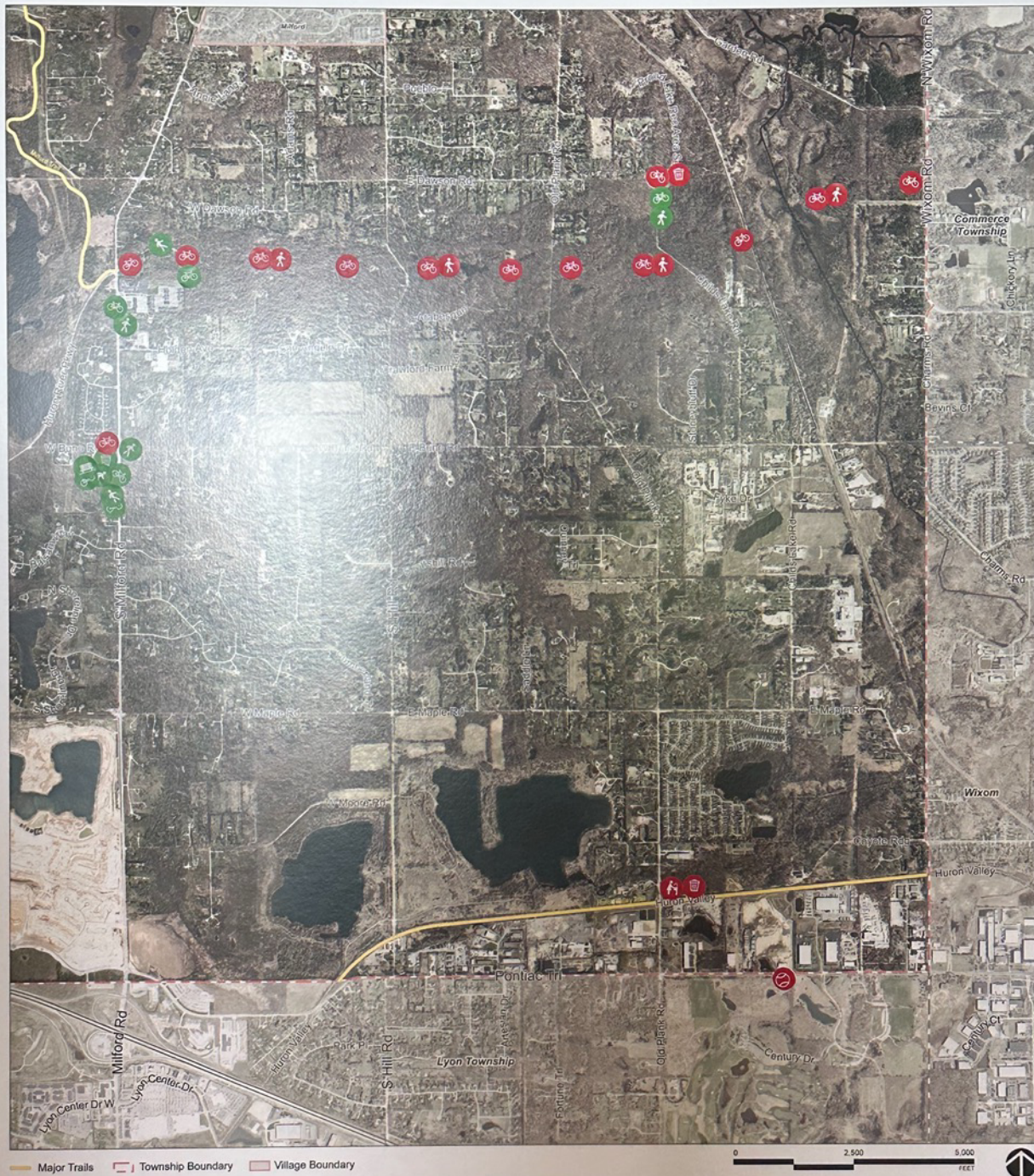


NORTHWEST QUADRANT

Where does Milford Township need park and recreation amenities? What types of amenities are needed?

Place green icon stickers in the location where the amenity is sufficient. Place red icon stickers where the amenity is missing or needed.





SOUTHEAST QUADRANT

Where does Milford Township need park and recreation amenities? What types of amenities are needed?

Place green icon stickers in the location where the amenity is sufficient. Place red icon stickers where the amenity is missing or needed.





SOUTHWEST QUADRANT

Where does Milford Township need park and recreation amenities? What types of amenities are needed?

Place green icon stickers in the location where the amenity is sufficient. Place red icon stickers where the amenity is missing or needed.



Appendix B:

Post-Completion Self-Certification Report



**PUBLIC OUTDOOR RECREATION GRANT
POST-COMPLETION SELF-CERTIFICATION REPORT**

*This information required under authority of Part 19, PA 451 of 1994, as amended;
the Land and Water Conservation Fund Act of 1965, 78 Stat. 897 (1964); and Part 715, of PA 451 of 1994, as amended.*

GRANT TYPE: ☒ MICHIGAN NATURAL RESOURCES TRUST FUND ☐ CLEAN MICHIGAN INITIATIVE
(Please select one) ☐ LAND AND WATER CONSERVATION FUND ☐ RECREATION PASSPORT ☐ BOND FUND

GRANTEE: Charter Township of Milford

PROJECT NUMBER: TF06-074

PROJECT TYPE: Trail Development

PROJECT TITLE: Milford to Kensington Metropark Trail

PROJECT SCOPE: 2.9-mile non-motorized trail through Kensington Metropark

TO BE COMPLETED BY LOCAL GOVERNMENT AGENCY (GRANTEE)

Name of Agency (Grantee)	Contact Person	Title
Charter Township of Milford	Donald Green	Supervisor
Address	Telephone	
1100 Atlantic Street	(248) 685-8731	
City, State, ZIP	Email	
Milford Charter Twp, MI 48381	dgreen@milfordtwpmi.gov	

SITE DEVELOPMENT

Any change(s) in the facility type, site layout, or recreation activities provided?
If yes, please describe change(s).

☐ Yes ☒ No

Has any portion of the project site been converted to a use other than outdoor recreation? If yes, please describe what portion and describe use. (This would include cell towers and any non-recreation buildings.)

☐ Yes ☒ No

Are any of the facilities obsolete? If yes, please explain.

☐ Yes ☒ No

SITE QUALITY

Is there a park entry sign which identifies the property or facility as a public recreation area?
If yes, please provide a photograph of the sign. If no, please explain.

☒ Yes ☐ No

Are the facilities and the site being properly maintained? If no, please explain.

☒ Yes ☐ No

Is vandalism a problem at this site? If yes, explain the measures being taken to prevent or minimize vandalism.

☐ Yes ☒ No

POST COMPLETION SELF-CERTIFICATION REPORT - CONT'D

Is maintenance scheduled on a regular basis? If yes, give schedule. If no, please explain.

☐ Yes ☒ No

Maintenenance of the trail and boardwalk has not been necessary but is monitored for when
maintenance/ replacement will be necessary.

GENERAL

Is a Program Recognition plaque permanently displayed at the site? If yes, please provide a photograph. (Not required for Bond Fund Grants)

☒ Yes ☐ No ☐ N/A

Is any segment of the general public restricted from using the site or facilities?
(i.e. resident only, league only, boaters only, etc.) If yes, please explain.

☐ Yes ☒ No

Is a fee charged for use of the site or facilities? If yes, please provide fee structure.

☐ Yes ☒ No

What are the hours and seasons for availability of the site?

Open 24/7

COMMENTS (ATTACH SEPARATE SHEET IF MORE SPACE IS NEEDED)

POST COMPLETION SELF-CERTIFICATION REPORT - CONT'D

CERTIFICATION

I do hereby certify that I am duly elected, appointed and/or authorized by the Grantee named above and that the information and answers provided herein are true and accurate to the best of my personal knowledge, information and belief.

DONALD D. GREEN

Please print



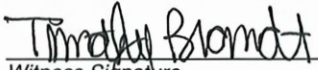
Grantee Authorized Signature

8/31/2023

Date

TIMOTHY BRANDT

Please print



Witness Signature

8/31/2023

Date

Send completed report to:

**POST COMPLETION GRANT INSPECTION REPORTS
GRANTS MANAGEMENT
MICHIGAN DEPARTMENT OF NATURAL RESOURCES
PO BOX 30425
LANSING MI 48909-7925**



Appendix C:

Published Hearing Notice and Meeting Minutes from Hearing and Resolution of Adoption





Detroit
GANNETT

PO Box 630491 Cincinnati, OH 45263-0491

AFFIDAVIT OF PUBLICATION


MILFORD TOWNSHIP
Milford Township
1100 Atlantic St
Milford MI 48381-2000

STATE OF WISCONSIN, COUNTY OF BROWN

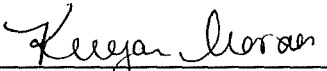
The Milford Times, Novi News, Northville Record, South Lyon Herald newspapers published in the State of Michigan, with general circulation in the State of Michigan, and personal knowledge of the facts herein state and that the notice hereto annexed was Published in said newspapers in the issue:

12/05/2024, 12/12/2024, 12/19/2024, 12/26/2024

and that the fees charged are legal.
Subscribed and sworn to before me on 12/26/2024



Legal Clerk



Notary, State of WI, County of Brown

2148

My commission expires

Publication Cost:	\$862.80	
Tax Amount:	\$0.00	
Payment Cost:	\$862.80	
Order No:	10799434	# of Copies:
Customer No:	1434151	1
PO #:		

THIS IS NOT AN INVOICE!

Please do not use this form for payment remittance.

KEEGAN MORAN
Notary Public
State of Wisconsin



**NOTICE
MILFORD TOWNSHIP
OAKLAND COUNTY, MICHIGAN
NOTICE OF 30-DAY PUBLIC REVIEW AND
COMMENT PERIOD AND
PUBLIC HEARING
FOR THE 2024-2028 FIVE-YEAR PARKS AND RECREATION
MASTER PLAN**

Public Review Period:
December 12th, 2024 – January 12th, 2025

Public Hearing:
Monday, January 13th, 2025
7:00 pm

Notice is hereby given to any and all interested parties that Milford Township is seeking public comment on the Milford Township Five Year 2024-2028 Parks and Recreation Master Plan.

The required 30-day public review and comment period will begin on December 12th, 2024, and will end on January 12th, 2025. Milford Township is preparing this Five-Year Parks and Recreation Plan in accordance with the Michigan Department of Natural Resources requirements. When completed, the plan will serve as a guide for the acquisition and development of community recreation facilities and programs over the next five (5) years.

Beginning December 12th, 2024, copies of the draft of the Milford Township Five-Year Parks and Recreation Plan may be found at Milford Township, 1100 Atlantic Street Milford, MI 48381 and at www.milfordtwpmi.gov.

Milford Township residents are asked to submit comments in writing via email to hwhitehill@mcka.com or via mail to Milford Township, 1100 Atlantic St, Milford, MI 48381.

A follow-up public hearing hosted by the Parks and Recreation Commission will take place at the Milford Police Department Conference Room on January 13th, 2025 at 7 pm, 1100 Atlantic Street Milford, MI 48381. Any and all input is greatly appreciated.

Published: December 5, 12, 19, 26, 2024

10799434 3x5

Appendix D: Transmittals

